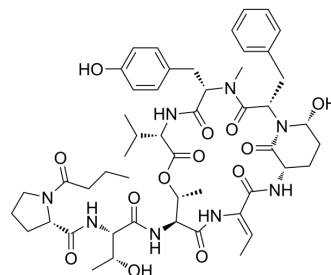


Rivulariapeptolides 988

| | |
|--------------------|---|
| Cat. No.: | HY-N4333 |
| Molecular Formula: | C ₅₀ H ₆₈ N ₈ O ₁₃ |
| Molecular Weight: | 989.12 |
| Target: | Ser/Thr Protease |
| Pathway: | Metabolic Enzyme/Protease |
| Storage: | Please store the product under the recommended conditions in the Certificate of Analysis. |



BIOLOGICAL ACTIVITY

| | |
|-------------------------------------|--|
| Description | Rivulariapeptolides 988 is a high potent and selective serine protease inhibitor with IC ₅₀ values of 95.46 nM, 15.29 nM and 85.50 nM for chymotrypsin, elastase and proteinase K, respectively ^[1] . |
| IC₅₀ & Target | IC ₅₀ : 95.46 nM (chymotrypsin); 15.29 nM (elastase) and 85.50 nM (proteinase K) ^[1] . |
| In Vitro | Rivulariapeptolides 988 (0-3 μM, 40 min) has high potency and distinct selectivity with IC ₅₀ values of 95.46 nM, 15.29 nM and 85.50 nM for chymotrypsin, elastase and proteinase K, respectively ^[1] . MCE has not independently confirmed the accuracy of these methods. They are for reference only. |

REFERENCES

[1]. Raphael Reher, et al. Native metabolomics identifies the rivulariapeptolide family of protease inhibitors. Nat Commun. 2022 Aug 8;13(1):4619.

Caution: Product has not been fully validated for medical applications. For research use only.

Tel: 609-228-6898

Fax: 609-228-5909

E-mail: tech@MedChemExpress.com

Address: 1 Deer Park Dr, Suite Q, Monmouth Junction, NJ 08852, USA