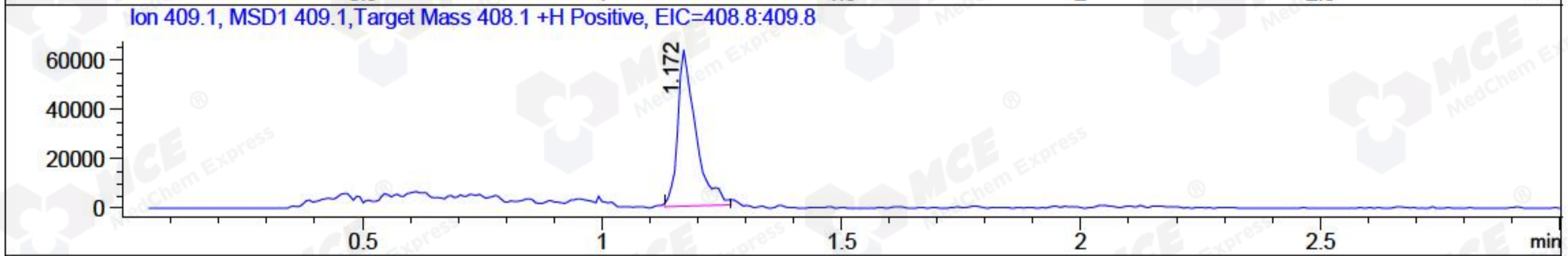
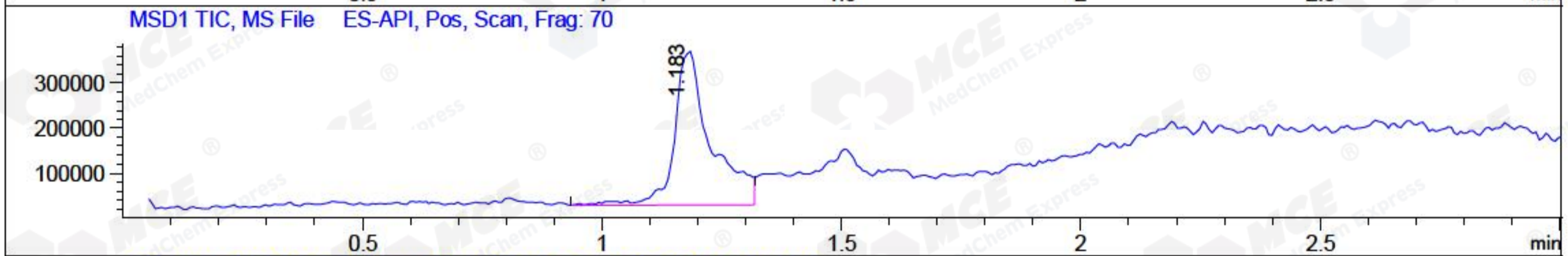
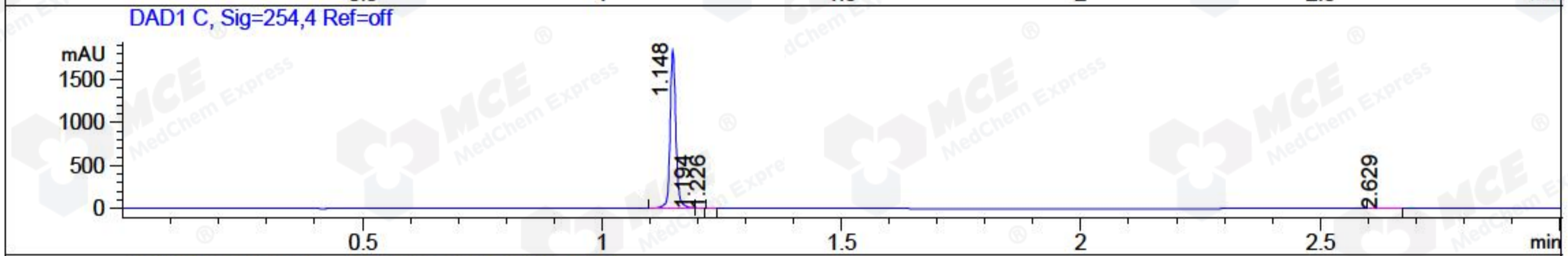
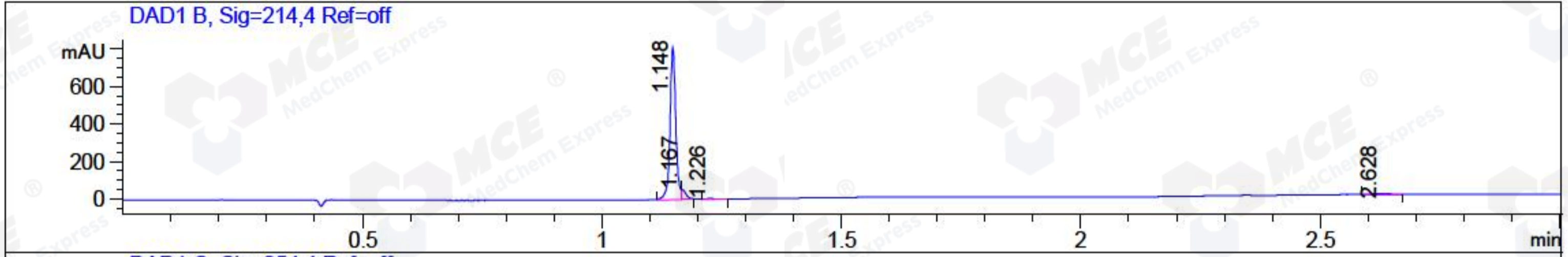


File ..DATA\2018\20181113\488\BIZ2018-N12-WYQ6.D Tgt Mass (CHM) :
 Injection Date : 13 Nov 18 12:51 pm +0800 Seq. Line : 34
 Sample Name : BIZ2018-N12-WYQ6 Location : P1-A-04
 Acq. Operator : LQ_1052 Inj : 1
 Spec. Reported : MS Integration Inj Volume : 3 ul
 Acq. Method : D:\Chem32\1\data\2018\20181113\488\1-POS-3MIN-1.M
 Analysis Method : D:\CHEM32\1\DATA\2018\20181113\488\1-POS-3MIN-1.M
 Catalog No : HY-N5012 Batch#34499 A-RP-314
 Method Info : Mobile Phase: A: water(0.01%TFA) B:ACN(0.01%TFA)
 Gradient: 5% to 95%B within 1.3 min
 Flow Rate : 1.8ml/min
 Column :SunFire C18, 4.6*50mm,3.5um A-RP-314
 Oven Temperature : 45□



Integration Results for DAD1 B, Sig=214,4 Ref=off

| RetTim | Width | Area | Height | Area% | MS (+) |
|--------|-------|--------|--------|-------|--------|
| 1.15 | 0.01 | 684.14 | 814.64 | 93.10 | 391 |
| 1.17 | 0.01 | 32.86 | 53.06 | 4.47 | 391 |
| 1.23 | 0.01 | 4.74 | 5.03 | 0.65 | 391 |
| 2.63 | 0.05 | 13.13 | 4.46 | 1.79 | 834 |

Integration Results for DAD1 C, Sig=254,4 Ref=off

| RetTim | Width | Area | Height | Area% | MS (+) |
|--------|-------|---------|---------|-------|--------|
| 1.15 | 0.01 | 1542.28 | 1843.39 | 99.48 | 391 |
| 1.19 | 0.01 | 3.34 | 4.99 | 0.22 | 391 |
| 1.23 | 0.01 | 2.00 | 2.93 | 0.13 | 391 |
| 2.63 | 0.04 | 2.70 | 1.13 | 0.17 | 834 |

Integration Results for MSD1 TIC, MS File

| RetTim | Width | Area | Height | Area% | MS (+) |
|--------|-------|------------|-----------|--------|--------|
| 1.18 | 0.07 | 1827399.75 | 343028.47 | 100.00 | 391 |

Ret. Time: 1.18

<<<< POSITIVE SPECTRA >>>>

*ES-API Positive

