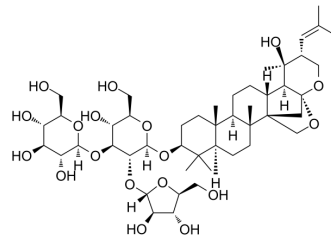


## Bacopaside II

<b>Cat. No.:</b>	HY-N6016
<b>CAS No.:</b>	382146-66-9
<b>Molecular Formula:</b>	C <sub>47</sub> H <sub>76</sub> O <sub>18</sub>
<b>Molecular Weight:</b>	929.1
<b>Target:</b>	Apoptosis
<b>Pathway:</b>	Apoptosis
<b>Storage:</b>	4°C, protect from light * In solvent : -80°C, 6 months; -20°C, 1 month (protect from light)



### SOLVENT & SOLUBILITY

<b>In Vitro</b>	DMSO : 100 mg/mL (107.63 mM; Need ultrasonic)				
		<b>Solvent</b>	<b>Mass</b>		
	<b>Preparing Stock Solutions</b>	<b>Concentration</b>	<b>1 mg</b>	<b>5 mg</b>	<b>10 mg</b>
		<b>1 mM</b>	1.0763 mL	5.3816 mL	10.7631 mL
		<b>5 mM</b>	0.2153 mL	1.0763 mL	2.1526 mL
<b>10 mM</b>		0.1076 mL	0.5382 mL	1.0763 mL	
Please refer to the solubility information to select the appropriate solvent.					
<b>In Vivo</b>	1. Add each solvent one by one: 10% DMSO >> 40% PEG300 >> 5% Tween-80 >> 45% saline Solubility: 2.5 mg/mL (2.69 mM); Suspended solution; Need ultrasonic  2. Add each solvent one by one: 10% DMSO >> 90% corn oil Solubility: ≥ 2.5 mg/mL (2.69 mM); Clear solution				

### BIOLOGICAL ACTIVITY

<b>Description</b>	Bacopaside II, an extract from the medicinal herb Bacopa monnieri, blocks the Aquaporin-1 (AQP1) water channel and impairs migration of cells that express AQP1. Bacopaside II induces cell cycle arrest and apoptosis <sup>[1][2]</sup> .
--------------------	--

### REFERENCES

[1]. Palethorpe HM, et al. The Aquaporin 1 Inhibitor Bacopaside II Reduces Endothelial Cell Migration and Tubulogenesis and Induces Apoptosis. *Int J Mol Sci.* 2018 Feb 26;19(3). pii: E653.

[2]. Smith E, et al. The Purified Extract from the Medicinal Plant Bacopa monnieri, Bacopaside II, Inhibits Growth of Colon Cancer Cells In Vitro by Inducing Cell Cycle Arrest and Apoptosis. *Cells.* 2018 Jul 21;7(7). pii: E81.

---

**Caution: Product has not been fully validated for medical applications. For research use only.**

Tel: 609-228-6898

Fax: 609-228-5909

E-mail: [tech@MedChemExpress.com](mailto:tech@MedChemExpress.com)

Address: 1 Deer Park Dr, Suite Q, Monmouth Junction, NJ 08852, USA