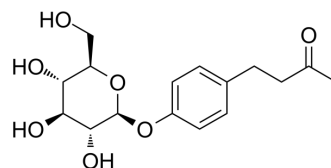


## Raspberry ketone glucoside

<b>Cat. No.:</b>	HY-N6069		
<b>CAS No.:</b>	38963-94-9		
<b>Molecular Formula:</b>	C <sub>16</sub> H <sub>22</sub> O <sub>7</sub>		
<b>Molecular Weight:</b>	326.34		
<b>Target:</b>	Others		
<b>Pathway:</b>	Others		
<b>Storage:</b>	Powder	-20°C	3 years
		4°C	2 years
	In solvent	-80°C	6 months
		-20°C	1 month



### SOLVENT & SOLUBILITY

#### In Vitro

DMSO : 50 mg/mL (153.21 mM; Need ultrasonic)

Preparing Stock Solutions	Solvent Concentration	Mass		
		1 mg	5 mg	10 mg
	1 mM	3.0643 mL	15.3214 mL	30.6429 mL
	5 mM	0.6129 mL	3.0643 mL	6.1286 mL
	10 mM	0.3064 mL	1.5321 mL	3.0643 mL

Please refer to the solubility information to select the appropriate solvent.

#### In Vivo

- Add each solvent one by one: 10% DMSO >> 90% (20% SBE-β-CD in saline)  
Solubility: ≥ 2.5 mg/mL (7.66 mM); Clear solution
- Add each solvent one by one: 10% DMSO >> 90% corn oil  
Solubility: ≥ 2.5 mg/mL (7.66 mM); Clear solution
- Add each solvent one by one: 10% DMSO >> 40% PEG300 >> 5% Tween-80 >> 45% saline  
Solubility: ≥ 1.72 mg/mL (5.27 mM); Clear solution

### BIOLOGICAL ACTIVITY

#### Description

Raspberry ketone glucoside is a natural product in raspberry fruit. Raspberry ketone glucoside has the inhibitory effect on the melanin synthesis<sup>[1]</sup>.

### REFERENCES

**Caution: Product has not been fully validated for medical applications. For research use only.**

Tel: 609-228-6898

Fax: 609-228-5909

E-mail: [tech@MedChemExpress.com](mailto:tech@MedChemExpress.com)

Address: 1 Deer Park Dr, Suite Q, Monmouth Junction, NJ 08852, USA