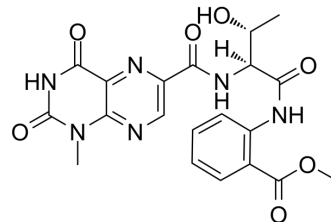


Terrelumamide A

Cat. No.:	HY-N6181
CAS No.:	1802497-05-7
Molecular Formula:	C ₂₀ H ₂₀ N ₆ O ₇
Molecular Weight:	456.41
Target:	Others
Pathway:	Others
Storage:	Please store the product under the recommended conditions in the Certificate of Analysis.



BIOLOGICAL ACTIVITY

Description

Terrelumamide A is a lumazine-containing peptide. Terrelumamide A is isolated from the culture broth of the marine-derived fungus *Aspergillus terreus*. Terrelumamide A exhibits pharmacological activity by improving insulin sensitivity. Terrelumamide A has the potential in the application of DNA sequence recognition^[1].

REFERENCES

[1]. You M, et al. Lumazine peptides from the marine-derived fungus *Aspergillus terreus*. *Mar Drugs*. 2015;13(3):1290-1303.

Caution: Product has not been fully validated for medical applications. For research use only.

Tel: 609-228-6898

Fax: 609-228-5909

E-mail: tech@MedChemExpress.com

Address: 1 Deer Park Dr, Suite Q, Monmouth Junction, NJ 08852, USA