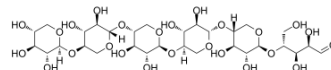


## Xylohexaose

Cat. No.:	HY-N6831
CAS No.:	49694-21-5
Molecular Formula:	C <sub>30</sub> H <sub>50</sub> O <sub>25</sub>
Molecular Weight:	810.7
Target:	Others
Pathway:	Others
Storage:	Please store the product under the recommended conditions in the COA.



### BIOLOGICAL ACTIVITY

#### Description

Xylohexaose is a hexasaccharide consisting of six xylose residues.

### REFERENCES

[1]. Najmudin S, et al. Purification, crystallization and crystallographic analysis of *Clostridium thermocellum* endo-1,4-beta-D-xylanase 10B in complex with xylohexaose. *Acta Crystallogr Sect F Struct Biol Cryst Commun.* 2008 Aug 1;64(Pt 8):715-8.

**Caution: Product has not been fully validated for medical applications. For research use only.**

Tel: 609-228-6898

Fax: 609-228-5909

E-mail: [tech@MedChemExpress.com](mailto:tech@MedChemExpress.com)

Address: 1 Deer Park Dr, Suite Q, Monmouth Junction, NJ 08852, USA