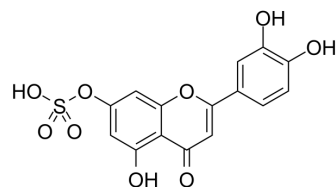


Luteolin 7-sulfate

Cat. No.:	HY-N6901
CAS No.:	56857-57-9
Molecular Formula:	C ₁₅ H ₁₀ O ₉ S
Molecular Weight:	366.3
Target:	Others
Pathway:	Others
Storage:	4°C, protect from light * In solvent : -80°C, 6 months; -20°C, 1 month (protect from light)



SOLVENT & SOLUBILITY

In Vitro	DMSO : 62.5 mg/mL (170.63 mM; Need ultrasonic)																							
	Preparing Stock Solutions	<table border="1"> <thead> <tr> <th rowspan="2">Solvent Concentration</th> <th colspan="3">Mass</th> </tr> <tr> <th>1 mg</th> <th>5 mg</th> <th>10 mg</th> </tr> </thead> <tbody> <tr> <td>1 mM</td> <td>2.7300 mL</td> <td>13.6500 mL</td> <td>27.3000 mL</td> </tr> <tr> <td>5 mM</td> <td>0.5460 mL</td> <td>2.7300 mL</td> <td>5.4600 mL</td> </tr> <tr> <td>10 mM</td> <td>0.2730 mL</td> <td>1.3650 mL</td> <td>2.7300 mL</td> </tr> </tbody> </table>	Solvent Concentration	Mass			1 mg	5 mg	10 mg	1 mM	2.7300 mL	13.6500 mL	27.3000 mL	5 mM	0.5460 mL	2.7300 mL	5.4600 mL	10 mM	0.2730 mL	1.3650 mL	2.7300 mL			
		Solvent Concentration		Mass																				
			1 mg	5 mg	10 mg																			
		1 mM	2.7300 mL	13.6500 mL	27.3000 mL																			
5 mM	0.5460 mL	2.7300 mL	5.4600 mL																					
10 mM	0.2730 mL	1.3650 mL	2.7300 mL																					
Please refer to the solubility information to select the appropriate solvent.																								
In Vivo	1. Add each solvent one by one: 10% DMSO >> 40% PEG300 >> 5% Tween-80 >> 45% saline Solubility: ≥ 2.08 mg/mL (5.68 mM); Clear solution 2. Add each solvent one by one: 10% DMSO >> 90% (20% SBE-β-CD in saline) Solubility: ≥ 2.08 mg/mL (5.68 mM); Clear solution																							

BIOLOGICAL ACTIVITY

Description	Luteolin 7-sulfate is isolated from <i>Phyllospadix iwatensis</i> Makino, a marine plant. Luteolin 7-sulfate attenuates TYR gene expression through the intervention of a cAMP-responsive element binding protein (CREB)- and microphthalmia-associated transcription factor (MITF)-mediated signaling pathway, leading to the decreased melanin synthesis ^[1] .
-------------	---

REFERENCES

[1]. Lee SW, et al. Luteolin 7-Sulfate Attenuates Melanin Synthesis through Inhibition of CREB- and MITF-Mediated Tyrosinase Expression. *Antioxidants* (Basel). 2019 Apr 4;8(4).

Caution: Product has not been fully validated for medical applications. For research use only.

Tel: 609-228-6898

Fax: 609-228-5909

E-mail: tech@MedChemExpress.com

Address: 1 Deer Park Dr, Suite Q, Monmouth Junction, NJ 08852, USA