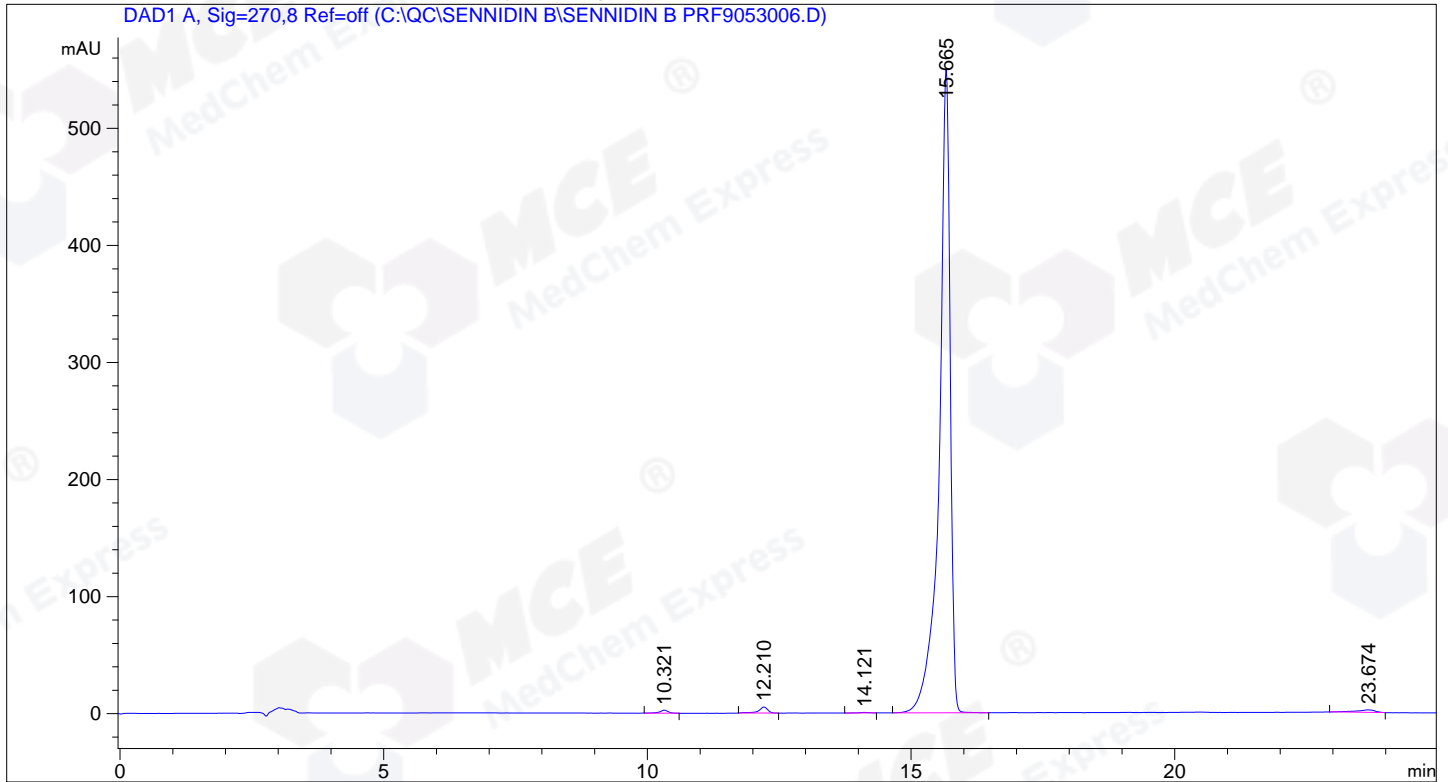


=====
CAS NO. : 517-44-2 Location : Vial 43
Injection Date : 2018-5-30 17:02:01 Inj Volume : 10.0 µl
Acq. Method : C:\QC\SENNIDIN B.M
Last changed : 2018-5-28 17:25:28 : -
Analysis Method : C:\QC\SENNIDIN A.M
Last changed : 2018-5-30 17:05:54 : -

Additional Info : Peak(s) manually integrated



=====
Area Percent Report
=====

Sorted By : Signal
Multiplier: : 1.0000
Dilution: : 1.0000
Use Multiplier & Dilution Factor with ISTDs

Signal 1: DAD1 A, Sig=270,8 Ref=off

Peak #	RetTime [min]	Type	Width [min]	Area [mAU*s]	Height [mAU]	Area %
1	10.321	MM R	0.1877	28.96962	2.57210	0.3629
2	12.210	MM R	0.1984	61.05144	5.12793	0.7647
3	14.121	BB	0.1664	5.81284	4.69530e-1	0.0728
4	15.665	BB	0.2084	7836.19092	549.27014	98.1566
5	23.674	MM R	0.4087	51.33311	2.09352	0.6430

Totals : 7983.35793 559.53322

=====
*** End of Report ***