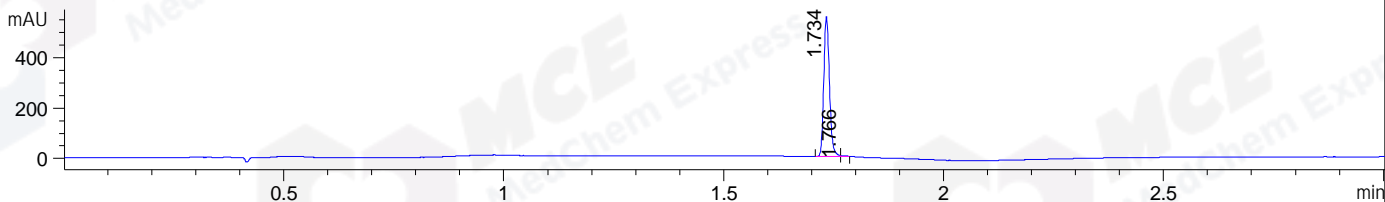
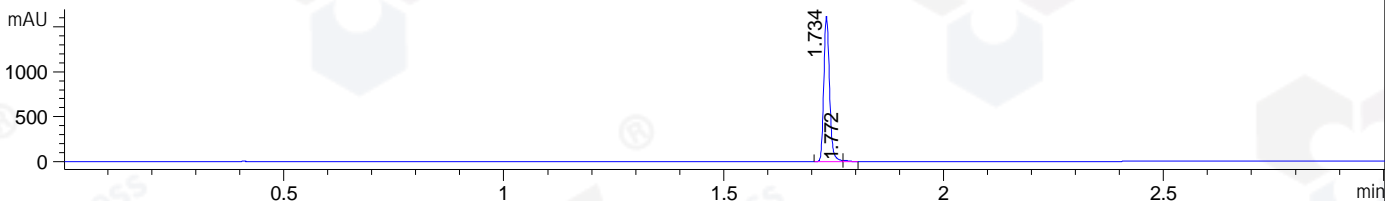


File ..1\DATA\2019\20190828\709\BIZ2019-828-WSD5.D Tgt Mass (CHM):  
Injection Date : 28 Aug 19 4:14 pm +0800 Seq. Line : 67  
Sample Name : BIZ2019-828-WSD5 Location : P1-C-01  
Acq. Operator : ZJ\_1432 Inj : 1  
Spec. Reported : MS Integration Inj Volume : 1 ul  
Acq. Method : D:\Chem32\1\data\2019\20190828\709\1-POS-3MIN.M  
Analysis Method : D:\CHEM32\1\DATA\2019\20190828\709\1-POS-3MIN.M  
Catalog No : HY-N6939 Batch#44868  
Method Info : Mobile Phase: A: water(0.01%TFA) B:ACN(0.01%TFA)  
Gradient: 5% to 95%B within 1.3 min  
Flow Rate :1.8ml/min  
Column :SunFire C18, 4.6\*50mm,3.5um A-RP-433  
Oven Temperature : 45□

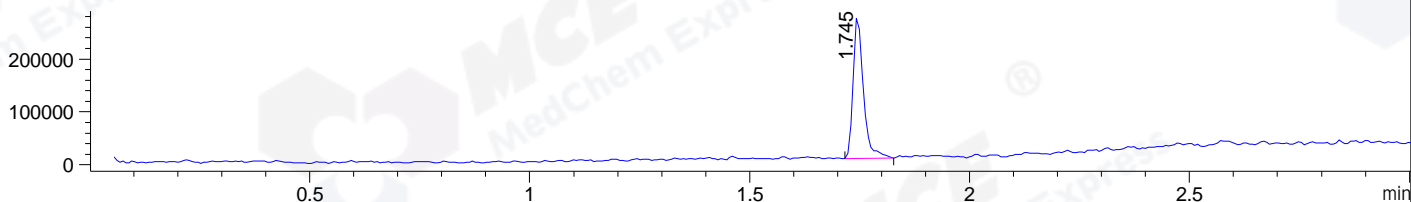
DAD1 B, Sig=214,4 Ref=off



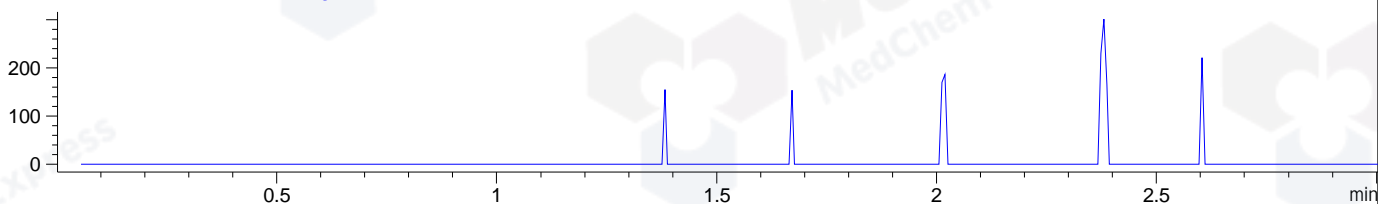
DAD1 C, Sig=254,4 Ref=off



MSD1 TIC, MS File ES-API, Pos, Scan, Frag: 70



Ion 433.18, MSD1 433.18, Target Mass 432.18 +H Positive, EIC=432.88:433.88



## Integration Results for DAD1 B, Sig=214,4 Ref=off

RetTim	Width	Area	Height	Area%	MS (+)
1.73	0.01	497.57	556.96	99.47	455
1.77	0.01	2.64	3.37	0.53	455

## Integration Results for DAD1 C, Sig=254,4 Ref=off

RetTim	Width	Area	Height	Area%	MS (+)
1.73	0.02	1468.83	1624.43	99.28	455
1.77	0.01	10.72	13.61	0.72	455

## Integration Results for MSD1 TIC, MS File

RetTim	Width	Area	Height	Area%	MS (+)
1.75	0.02	439113.44	269999.63	100.00	455

Ret. Time: 1.75

<<<< POSITIVE SPECTRA >>>>

ES-API Positive

