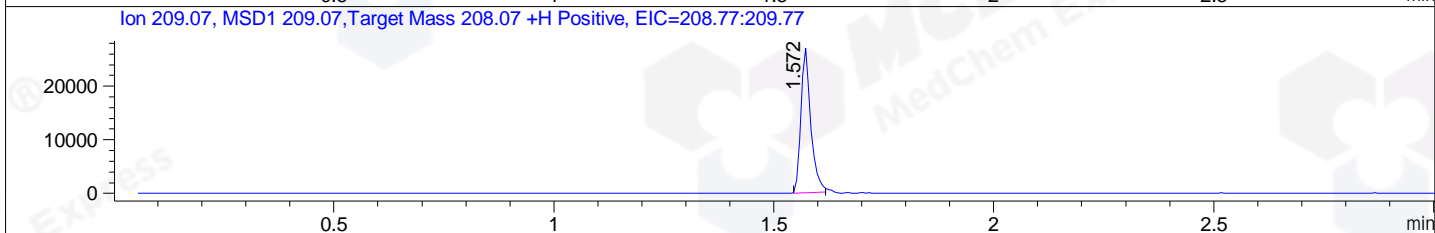
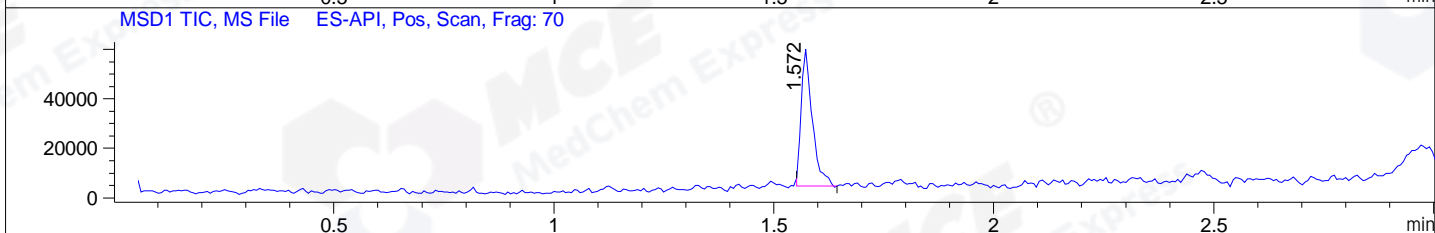
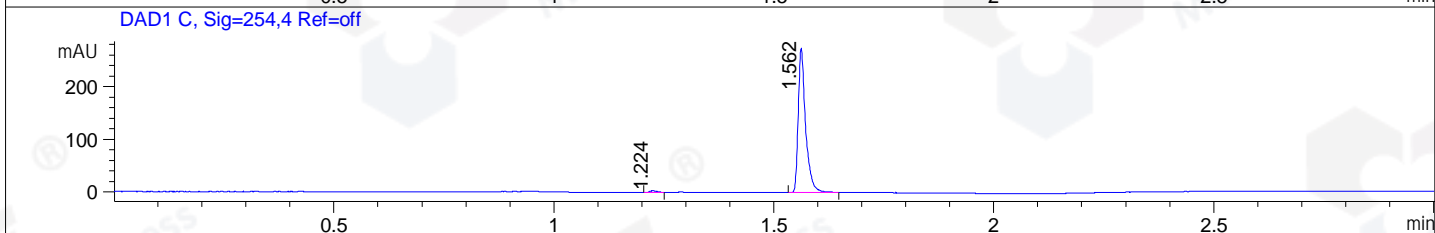
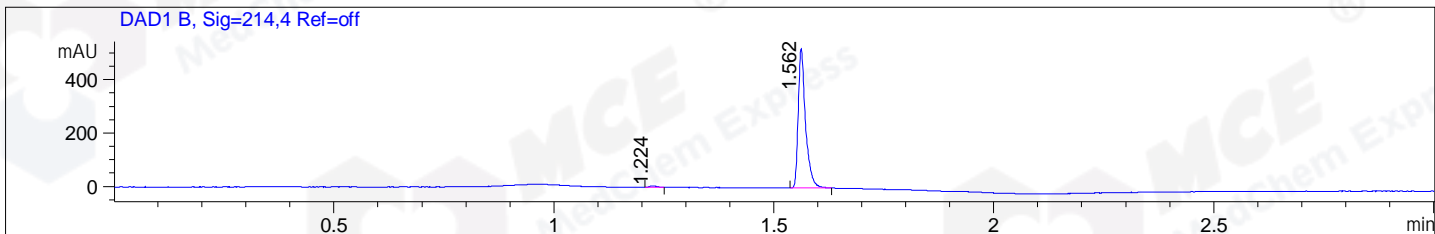


File ..\DATA\2019\20191017\735\BIZ2019-016-CXL1.D Tgt Mass (CHM):
Injection Date : 17 Oct 19 2:47 pm +0800 Seq. Line : 10
Sample Name : BIZ2019-016-CXL1 Location : P1-A-04
Acq. Operator : ZJ_1432 Inj : 1
Spec. Reported : MS Integration Inj Volume : 0.3 ul
Acq. Method : D:\Chem32\1\data\2019\20191017\735\1-POS-3MIN.M
Analysis Method : D:\CHEM32\1\DATA\2019\20191017\735\1-POS-3MIN.M
Catalog No : HY-N6966 Batch#47125
Method Info : Mobile Phase: A: water(0.01%TFA) B:ACN(0.01%TFA)
Gradient: 5% to 95%B within 1.3 min
Flow Rate :1.8ml/min
Column :SunFire C18, 4.6*50mm,3.5um A-RP-433
Oven Temperature : 45□



Integration Results for DAD1 B, Sig=214,4 Ref=off

RetTim	Width	Area	Height	Area%	MS (+)
1.22	0.02	6.70	6.05	1.09	130
1.56	0.02	605.83	522.87	98.91	209

Integration Results for DAD1 C, Sig=254,4 Ref=off

RetTim	Width	Area	Height	Area%	MS (+)
1.22	0.02	3.57	3.19	1.10	130
1.56	0.02	319.95	273.99	98.90	209

Integration Results for MSD1 TIC, MS File

RetTim	Width	Area	Height	Area%	MS (+)
1.57	0.03	97349.15	55276.89	100.00	209

Ret. Time: 1.57

<<<< POSITIVE SPECTRA >>>>

ES-API Positive

