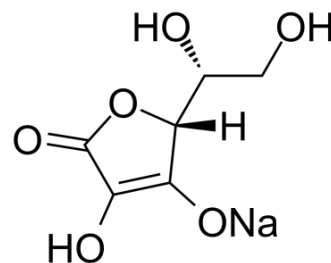


## Sodium erythorbate

Cat. No.:	HY-N7079A
CAS No.:	6381-77-7
Molecular Formula:	C <sub>6</sub> H <sub>7</sub> NaO <sub>6</sub>
Molecular Weight:	198.11
Target:	Others
Pathway:	Others
Storage:	4°C, protect from light * In solvent : -80°C, 6 months; -20°C, 1 month (protect from light)



### BIOLOGICAL ACTIVITY

#### Description

Sodium erythorbate (D-Isoascorbic acid sodium), produced from sugars derived from different sources, such as beets, sugar cane, and corn, is a food additive used predominantly in meats, poultry, and soft drinks.

**Caution: Product has not been fully validated for medical applications. For research use only.**

Tel: 609-228-6898

Fax: 609-228-5909

E-mail: [tech@MedChemExpress.com](mailto:tech@MedChemExpress.com)

Address: 1 Deer Park Dr, Suite Q, Monmouth Junction, NJ 08852, USA