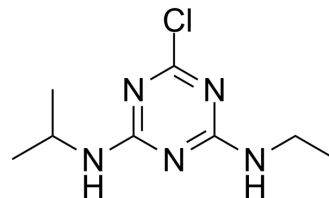


## Atrazine

|                    |  |
|--------------------|--|
| Cat. No.:          | HY-N7091   |
| CAS No.:           | 1912-24-9  |
| Molecular Formula: | C <sub>8</sub> H <sub>14</sub> ClN <sub>5</sub>  |
| Molecular Weight:  | 215.68   |
| Target:            | Others   |
| Pathway:           | Others   |
| Storage:           | 4°C, sealed storage, away from moisture<br>* In solvent : -80°C, 6 months; -20°C, 1 month (sealed storage, away from moisture) |



### SOLVENT & SOLUBILITY

|   |  |                          |      |       |           |            |            |
|---|--|--------------------------|------|-------|-----------|------------|------------|
| In Vitro  | DMSO : 83.33 mg/mL (386.36 mM; Need ultrasonic)  |                          |      |       |           |            |            |
|   | Preparing Stock Solutions  | Solvent<br>Concentration | Mass | 1 mg  | 5 mg      | 10 mg      |            |
|   |  |                          |      | 1 mM  | 4.6365 mL | 23.1825 mL | 46.3650 mL |
|   |  |                          |      | 5 mM  | 0.9273 mL | 4.6365 mL  | 9.2730 mL  |
|   |  |                          |      | 10 mM | 0.4636 mL | 2.3182 mL  | 4.6365 mL  |
| Please refer to the solubility information to select the appropriate solvent. |  |                          |      |       |           |            |            |
| In Vivo   | 1. Add each solvent one by one: 10% DMSO >> 90% corn oil<br>Solubility: ≥ 2.5 mg/mL (11.59 mM); Clear solution |                          |      |       |           |            |            |

### BIOLOGICAL ACTIVITY

|             |   |
|-------------|---|
| Description | Atrazine is principally used for control of certain annual broadleaf and grass weeds. Atrazine inhibits photophosphorylation but typically does not result in lethality or permanent cell damage in the short term <sup>[1]</sup> . |
|-------------|---|

### CUSTOMER VALIDATION

- J Hazard Mater. 2023 Mar 10.

See more customer validations on [www.MedChemExpress.com](http://www.MedChemExpress.com)

### REFERENCES

**Caution: Product has not been fully validated for medical applications. For research use only.**

Tel: 609-228-6898

Fax: 609-228-5909

E-mail: [tech@MedChemExpress.com](mailto:tech@MedChemExpress.com)

Address: 1 Deer Park Dr, Suite Q, Monmouth Junction, NJ 08852, USA