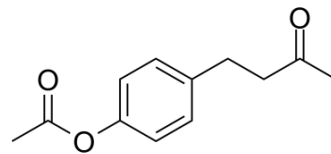


Cue-lure

Cat. No.:	HY-N7099
CAS No.:	3572-06-3
Molecular Formula:	C ₁₂ H ₁₄ O ₃
Molecular Weight:	206.24
Target:	Others
Pathway:	Others
Storage:	Please store the product under the recommended conditions in the Certificate of Analysis.



BIOLOGICAL ACTIVITY

Description	Cue-lure (Q-lure) is a melon fly attractant ^[1] .
-------------	--

REFERENCES

[1]. Jang EB, et al. Field captures of wild melon fly (Diptera: Tephritidae) with an improved male attractant, raspberry ketone formate. J Econ Entomol. 2007 Aug;100(4):1124-8.

Caution: Product has not been fully validated for medical applications. For research use only.

Tel: 609-228-6898

Fax: 609-228-5909

E-mail: tech@MedChemExpress.com

Address: 1 Deer Park Dr, Suite Q, Monmouth Junction, NJ 08852, USA