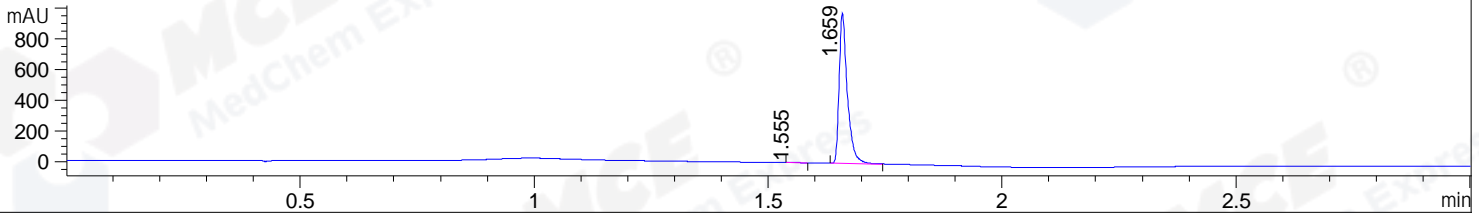
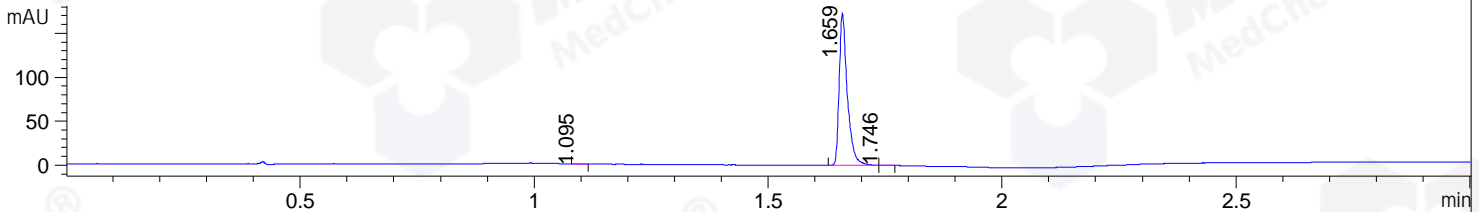


File ..\DATA\2019\20190921\714\BIZ2019-909-WMX60.D Tgt Mass (CHM):
 Injection Date : 21 Sep 19 10:47 am +0800 Seq. Line : 21
 Sample Name : BIZ2019-909-WMX60 Location : PI-A-02
 Acq. Operator : ZJ_1432 Inj : 1
 Spec. Reported : MS Integration Inj Volume : 1 ul
 Acq. Method : D:\Chem32\1\data\2019\20190921\714\1-POS-3MIN.M
 Analysis Method : D:\CHEM32\1\DATA\2019\20190921\714\1-POS-3MIN.M
 Catalog No : HY-N7106 Batch#46038
 Method Info : Mobile Phase: A: water(0.01%TFA) B:ACN(0.01%TFA)
 Gradient: 5% to 95%B within 1.3 min
 Flow Rate :1.8ml/min
 Column :SunFire C18, 4.6*50mm,3.5um A-RP-433
 Oven Temperature : 45

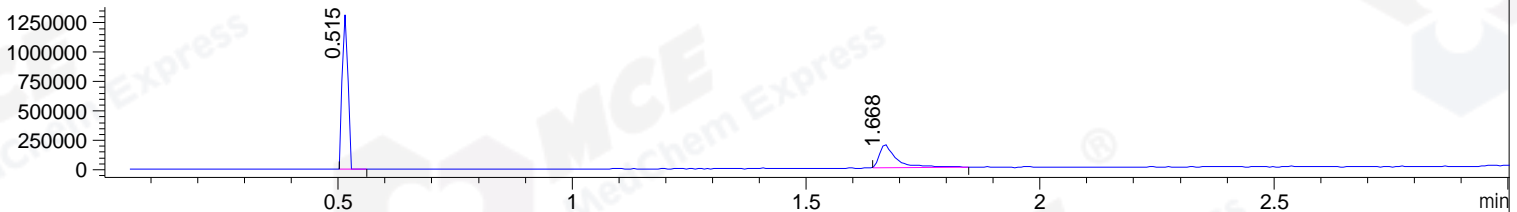
DAD1 B, Sig=214,4 Ref=off



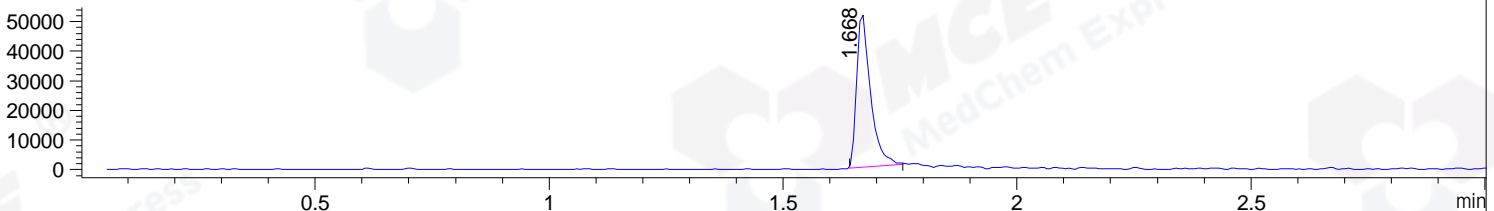
DAD1 C, Sig=254,4 Ref=off



MSD1 TIC, MS File ES-API, Pos, Scan, Frag: 70



Ion 195.06, MSD1 195.06, Target Mass 194.06 +H Positive, EIC=194.76:195.76



Integration Results for DAD1 B, Sig=214,4 Ref=off

RetTim	Width	Area	Height	Area%	MS (+)
1.55	0.02	3.75	3.21	0.31	329
1.66	0.02	1189.64	978.94	99.69	163

Integration Results for DAD1 C, Sig=254,4 Ref=off

RetTim	Width	Area	Height	Area%	MS (+)
1.09	0.02	0.29	0.29	0.14	ND
1.66	0.02	209.24	172.97	99.66	163
1.75	0.02	0.42	0.34	0.20	217

Integration Results for MSD1 TIC, MS File

RetTim	Width	Area	Height	Area%	MS (+)
0.51	0.02	1106443.50	1316109.63	68.44	824
1.67	0.04	510254.56	197396.98	31.56	163

Ret. Time: 0.51

<<<< POSITIVE SPECTRA >>>>

ES-API Positive



Ret. Time: 1.67

ES-API Positive

