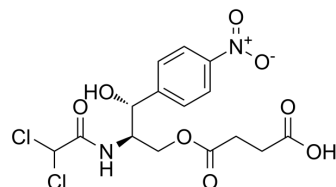


Chloramphenicol succinate

Cat. No.:	HY-N7114
CAS No.:	3544-94-3
Molecular Formula:	C ₁₅ H ₁₆ Cl ₂ N ₂ O ₈
Molecular Weight:	423.2
Target:	Antibiotic; Bacterial
Pathway:	Anti-infection
Storage:	Please store the product under the recommended conditions in the Certificate of Analysis.



BIOLOGICAL ACTIVITY

Description

Chloramphenicol succinate is a proagent of Chloramphenicol, with Haemotoxicity. Chloramphenicol succinate also is an antibiotic. Chloramphenicol succinate is a competitive substrate and inhibitor of succinate dehydrogenase (SDH) that is the possible reason for its toxicity^{[1][2][3][4]}.

CUSTOMER VALIDATION

- Animal Diseases. 02 November 2021.

See more customer validations on www.MedChemExpress.com

REFERENCES

- [1]. Ambrose PJ. Clinical pharmacokinetics of chloramphenicol and chloramphenicol succinate. *Clin Pharmacokinet.* 1984 May-Jun;9(3):222-38.
- [2]. Ambekar CS, et al. Chloramphenicol succinate, a competitive substrate and inhibitor of succinate dehydrogenase: possible reason for its toxicity. *Toxicol In Vitro.* 2004 Aug;18(4):441-7.
- [3]. Turton JA, et al. Haemotoxicity of chloramphenicol succinate in the CD-1 mouse and Wistar Hanover rat. *Hum Exp Toxicol.* 1999 Sep;18(9):566-76.
- [4]. Lofrano G, et al. Photocatalytic degradation of the antibiotic chloramphenicol and effluent toxicity effects. *Ecotoxicol Environ Saf.* 2016 Jan;123:65-71.

Caution: Product has not been fully validated for medical applications. For research use only.

Tel: 609-228-6898

Fax: 609-228-5909

E-mail: tech@MedChemExpress.com

Address: 1 Deer Park Dr, Suite Q, Monmouth Junction, NJ 08852, USA