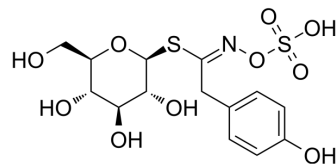


## Glucosinalbate

<b>Cat. No.:</b>	HY-N7257
<b>CAS No.:</b>	19253-84-0
<b>Molecular Formula:</b>	C <sub>14</sub> H <sub>19</sub> NO <sub>10</sub> S <sub>2</sub>
<b>Molecular Weight:</b>	425.43
<b>Target:</b>	Others
<b>Pathway:</b>	Others
<b>Storage:</b>	4°C, stored under nitrogen * In solvent : -80°C, 6 months; -20°C, 1 month (stored under nitrogen)



### SOLVENT & SOLUBILITY

#### In Vitro

DMSO : 50 mg/mL (117.53 mM; Need ultrasonic)

Preparing Stock Solutions	Solvent Concentration	Mass		
		1 mg	5 mg	10 mg
	1 mM	2.3506 mL	11.7528 mL	23.5056 mL
	5 mM	0.4701 mL	2.3506 mL	4.7011 mL
	10 mM	0.2351 mL	1.1753 mL	2.3506 mL

Please refer to the solubility information to select the appropriate solvent.

#### In Vivo

- Add each solvent one by one: 10% DMSO >> 40% PEG300 >> 5% Tween-80 >> 45% saline  
Solubility: ≥ 1.25 mg/mL (2.94 mM); Clear solution
- Add each solvent one by one: 10% DMSO >> 90% (20% SBE-β-CD in saline)  
Solubility: ≥ 1.25 mg/mL (2.94 mM); Clear solution
- Add each solvent one by one: 10% DMSO >> 90% corn oil  
Solubility: ≥ 1.25 mg/mL (2.94 mM); Clear solution

### BIOLOGICAL ACTIVITY

#### Description

Glucosinalbate is a natural product that can be isolated from *Arabidopsis thaliana*<sup>[1]</sup>.

### REFERENCES

[1]. Muto-Fujita A, et al. Data integration aids understanding of butterfly-host plant networks. *Sci Rep.* 2017 Mar 6;7:43368.

---

**Caution: Product has not been fully validated for medical applications. For research use only.**

Tel: 609-228-6898

Fax: 609-228-5909

E-mail: [tech@MedChemExpress.com](mailto:tech@MedChemExpress.com)

Address: 1 Deer Park Dr, Suite Q, Monmouth Junction, NJ 08852, USA