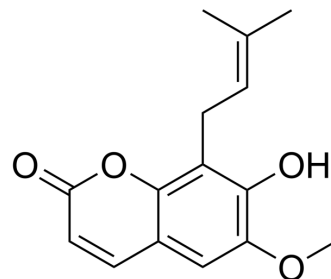


Cedrelopsin

Cat. No.:	HY-N7290
CAS No.:	19397-28-5
Molecular Formula:	C ₁₅ H ₁₆ O ₄
Molecular Weight:	260.29
Target:	Others
Pathway:	Others
Storage:	Please store the product under the recommended conditions in the Certificate of Analysis.



BIOLOGICAL ACTIVITY

Description	Cedrelopsin is a natural phenylpropanoid compound ^[1] .
-------------	--

REFERENCES

[1]. Dulcie A Mulholland, et al. Coumarins from *Cedrelopsis grevei* (Ptaeroxylaceae). *Phytochemistry*. 2002 Dec;61(8):919-22.

Caution: Product has not been fully validated for medical applications. For research use only.

Tel: 609-228-6898

Fax: 609-228-5909

E-mail: tech@MedChemExpress.com

Address: 1 Deer Park Dr, Suite Q, Monmouth Junction, NJ 08852, USA