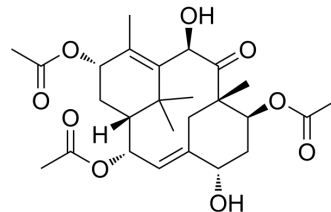


## Taxuspine W

Cat. No.:	HY-N7294
CAS No.:	181309-92-2
Molecular Formula:	C <sub>26</sub> H <sub>36</sub> O <sub>9</sub>
Molecular Weight:	492.56
Target:	Others
Pathway:	Others
Storage:	Please store the product under the recommended conditions in the Certificate of Analysis.



### BIOLOGICAL ACTIVITY

#### Description

Taxuspine W is a natural product, that can be isolated from the Japanese Yew *Taxus cuspidata*<sup>[1]</sup>.

### REFERENCES

[1]. Hosoyama H, et al. Taxuspines U, V, and W, New Taxane and Related Diterpenoids from the Japanese Yew *Taxus cuspidata*[J]. *Tetrahedron*, 1996, 52(41):13145-13150.

**Caution: Product has not been fully validated for medical applications. For research use only.**

Tel: 609-228-6898

Fax: 609-228-5909

E-mail: tech@MedChemExpress.com

Address: 1 Deer Park Dr, Suite Q, Monmouth Junction, NJ 08852, USA