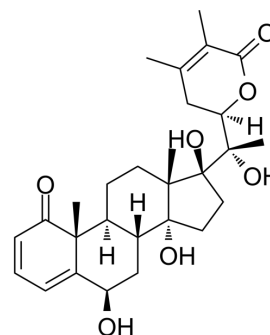


## Withaperuvin C

Cat. No.:	HY-N7340
CAS No.:	81644-34-0
Molecular Formula:	C <sub>28</sub> H <sub>38</sub> O <sub>7</sub>
Molecular Weight:	486.6
Target:	Others
Pathway:	Others
Storage:	Please store the product under the recommended conditions in the Certificate of Analysis.



### BIOLOGICAL ACTIVITY

#### Description

Withaperuvin C is a withanolide that can be isolated from *Physalis Minima*. Withaperuvin C has moderate cytotoxicity against cancer cells such as HepG2, SK-LU-1, and MCF7 cells (IC<sub>50</sub>: 19.5, 14.65, 11.74 µg/mL)<sup>[1]</sup>.

### REFERENCES

[1]. Le Canh VC, et al. Identification Of Potential Cytotoxic Inhibitors From *Physalis Minima*. *Nat Prod Res.* 2021 Jun;35(12):2082-2085.

**Caution: Product has not been fully validated for medical applications. For research use only.**

Tel: 609-228-6898

Fax: 609-228-5909

E-mail: tech@MedChemExpress.com

Address: 1 Deer Park Dr, Suite Q, Monmouth Junction, NJ 08852, USA