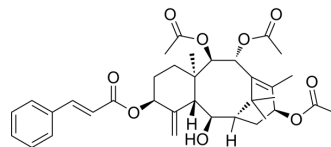


Taxezipidine G

Cat. No.:	HY-N7348
CAS No.:	205440-22-8
Molecular Formula:	C ₃₅ H ₄₄ O ₉
Molecular Weight:	608.72
Target:	Others
Pathway:	Others
Storage:	Please store the product under the recommended conditions in the Certificate of Analysis.



BIOLOGICAL ACTIVITY

Description

Taxezipidine G is a natural product, that can be isolated from the seeds and stems of Japanese Yew *Taxus cuspidata*^[1].

REFERENCES

[1]. Wang X. Taxezipidines B-H, new taxoids from Japanese yew *Taxus cuspidata*[J]. *Journal of Natural Products*, 1998, 61(4):474-479.

Caution: Product has not been fully validated for medical applications. For research use only.

Tel: 609-228-6898

Fax: 609-228-5909

E-mail: tech@MedChemExpress.com

Address: 1 Deer Park Dr, Suite Q, Monmouth Junction, NJ 08852, USA