

## Methyl propyl disulfide

---

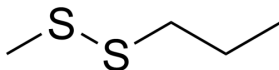
Cat. No.: HY-N7436  
CAS No.: 2179-60-4  
Batch No.: 336415  
Chemical Name: Disulfide, methyl propyl

### PHYSICAL AND CHEMICAL PROPERTIES

Molecular Formula: C<sub>4</sub>H<sub>10</sub>S<sub>2</sub>  
Molecular Weight: 122.25  
Storage: Pure form      -20°C    3 years  
                                  4°C        2 years  
                                  In solvent    -80°C    6 months  
  -20°C    1 month

Packaging: Sealed Vial  
\*Once the package is opened, use it immediately or pack it into multiple vials with sealing film.

Chemical Structure:



### ANALYTICAL DATA

Appearance: Colorless to light yellow (Liquid)  
<sup>1</sup>H NMR Spectrum: Consistent with structure  
Purity (NMR): ≥98.0%  
Conclusion: The product has been tested and complies with the given specifications.

**Caution: Product has not been fully validated for medical applications. For research use only.**

Tel: 609-228-6898      Fax: 609-228-5909      E-mail: tech@MedChemExpress.com  
Address: 1 Deer Park Dr, Suite Q, Monmouth Junction, NJ 08852, USA