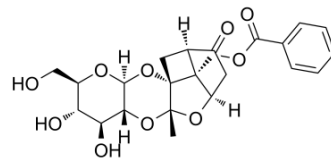


## Lactiflorin

|                    |   |
|--------------------|---|
| Cat. No.:          | HY-N7629  |
| CAS No.:           | 1361049-59-3  |
| Molecular Formula: | C <sub>23</sub> H <sub>26</sub> O <sub>10</sub>   |
| Molecular Weight:  | 462.45  |
| Target:            | Others  |
| Pathway:           | Others  |
| Storage:           | Please store the product under the recommended conditions in the Certificate of Analysis. |



### BIOLOGICAL ACTIVITY

#### Description

Lactiflorin, a monoterpene glycoside from paeony root, possesses nephroprotective effect<sup>[1]</sup>.

### REFERENCES

[1]. Su J, et al. Peony and diabetic nephropathy. Australian Journal of Medical Herbalism, vol. 21, no. 4, 2009, p. 111.

**Caution: Product has not been fully validated for medical applications. For research use only.**

Tel: 609-228-6898

Fax: 609-228-5909

E-mail: tech@MedChemExpress.com

Address: 1 Deer Park Dr, Suite Q, Monmouth Junction, NJ 08852, USA