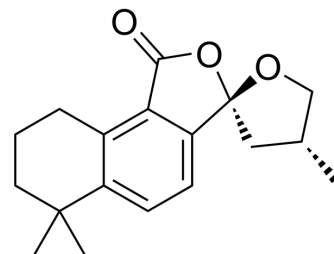


Epi-cryptoacetalide

Cat. No.:	HY-N7748A
CAS No.:	132152-57-9
Molecular Formula:	C ₁₈ H ₂₂ O ₃
Molecular Weight:	286.37
Target:	Estrogen Receptor/ERR; Prostaglandin Receptor
Pathway:	Others; GPCR/G Protein
Storage:	Please store the product under the recommended conditions in the Certificate of Analysis.



BIOLOGICAL ACTIVITY

Description	Epi-cryptoacetalide is a natural diterpenoid. Epi-cryptoacetalide reveals high affinity to ER- α and PGE2 receptor (EP2 subtype) with K _i values of 0.3 μ M and 1.92 μ M, respectively. Epi-cryptoacetalide has anti-endometriosis activities ^[1] .
IC₅₀ & Target	Ki: 0.3 μ M (ER- α) and 1.92 μ M (EP2 subtype) ^[1]
In Vitro	Epi-cryptoacetalide is one of the ingredients contained in <i>Salvia miltiorrhiza</i> which is known to have properties in removing blood stasis and relieving pain, activating blood to promote menstruation, relieving restlessness; irregular menstruation, amenorrhea, menalgia, mass in the abdomen, stabbing pain in the chest and abdomen, pyretic arthralgia, ulcers and sores, sleeplessness, swelling of the liver and spleen, angina pectoris ^[1] . MCE has not independently confirmed the accuracy of these methods. They are for reference only.

REFERENCES

[1]. Herbert Situmorang, et al. IN-SILICO dynamic analysis of Sulawesi propolis as anti-endometriosis drug: Interaction study with TNF alpha receptor, NF-kB, estrogen receptor, progesterone receptor and prostaglandin receptor. *Ann Med Surg (Lond)*. 2021 Jun 17;67:102459.

Caution: Product has not been fully validated for medical applications. For research use only.

Tel: 609-228-6898

Fax: 609-228-5909

E-mail: tech@MedChemExpress.com

Address: 1 Deer Park Dr, Suite Q, Monmouth Junction, NJ 08852, USA