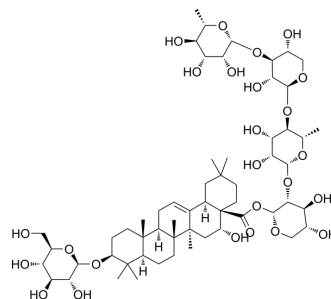


Chrysanthellin A

Cat. No.:	HY-N7762
CAS No.:	73039-13-1
Molecular Formula:	C ₅₈ H ₉₄ O ₂₅
Molecular Weight:	1191.35
Target:	Others
Pathway:	Others
Storage:	Please store the product under the recommended conditions in the Certificate of Analysis.



BIOLOGICAL ACTIVITY

Description

Chrysanthellin A is the main saponin-based compound from the extract of *Chrysanthellum americanum*. Chrysanthellin A can be used in the reserach of digestive impairments^[1].

REFERENCES

[1]. Roxana Cojocariu, et al. Antioxidant Capacity and Behavioral Relevance of a Polyphenolic Extract of *Chrysanthellum americanum* in a Rat Model of Irritable Bowel Syndrome. *Oxidative Medicine and Cellular Longevity*. 2019.

Caution: Product has not been fully validated for medical applications. For research use only.

Tel: 609-228-6898

Fax: 609-228-5909

E-mail: tech@MedChemExpress.com

Address: 1 Deer Park Dr, Suite Q, Monmouth Junction, NJ 08852, USA