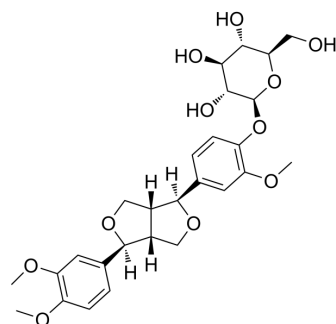


(+)-Pinoresinol monomethyl ether O-β-D-glucoside

Cat. No.:	HY-N7982
CAS No.:	74957-57-6
Molecular Formula:	C ₂₇ H ₃₄ O ₁₁
Molecular Weight:	534.55
Target:	Others
Pathway:	Others
Storage:	Please store the product under the recommended conditions in the Certificate of Analysis.



BIOLOGICAL ACTIVITY

Description

(+)-Pinoresinol monomethyl ether O-β-D-glucoside (Compound 6) is a natural product that can be isolated from the stems of *Tinospora sinensis*^[1].

REFERENCES

[1]. Li W, et al. New lignan glucosides from the stems of *Tinospora sinensis*. *Chem Pharm Bull (Tokyo)*. 2004 May;52(5):638-40.

Caution: Product has not been fully validated for medical applications. For research use only.

Tel: 609-228-6898

Fax: 609-228-5909

E-mail: tech@MedChemExpress.com

Address: 1 Deer Park Dr, Suite Q, Monmouth Junction, NJ 08852, USA