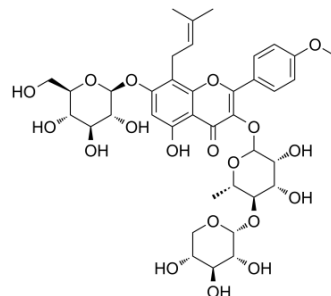


Epimedin B1

| | |
|--------------------|---|
| Cat. No.: | HY-N8084 |
| CAS No.: | 133137-58-3 |
| Molecular Formula: | C ₃₈ H ₄₈ O ₁₉ |
| Molecular Weight: | 808.78 |
| Target: | Others |
| Pathway: | Others |
| Storage: | Please store the product under the recommended conditions in the Certificate of Analysis. |



BIOLOGICAL ACTIVITY

Description

Epimedin B1 is initially isolated from *E. Wushanense* and is a Chemical marker of *E. sagittatum* in drug Yin-Yang-Huo. Epimedin B1 is the isomer of Epimedin B^[1].

REFERENCES

[1]. Li-LiQu, et al. Chemical markers of four species of Epimedium used in drug Yin-Yang-Huo

Caution: Product has not been fully validated for medical applications. For research use only.

Tel: 609-228-6898

Fax: 609-228-5909

E-mail: tech@MedChemExpress.com

Address: 1 Deer Park Dr, Suite Q, Monmouth Junction, NJ 08852, USA