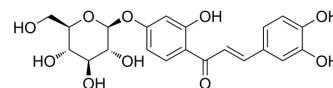


Coreopsin

Cat. No.:	HY-N8243
CAS No.:	499-29-6
Molecular Formula:	C ₂₁ H ₂₂ O ₁₀
Molecular Weight:	434.39
Target:	Others
Pathway:	Others
Storage:	Please store the product under the recommended conditions in the Certificate of Analysis.



BIOLOGICAL ACTIVITY

Description

Coreopsin is a natural product that can be isolated from *Coreopsis tinctoria* Nutt. flower. Coreopsin can be used for hypertension and diabetes research^[1].

REFERENCES

[1]. Li Y, et al. Screening of the active fractions from the *Coreopsis tinctoria* Nutt. Flower on diabetic endothelial protection and determination of the underlying mechanism. *J Ethnopharmacol.* 2020 May 10;253:112645.

Caution: Product has not been fully validated for medical applications. For research use only.

Tel: 609-228-6898

Fax: 609-228-5909

E-mail: tech@MedChemExpress.com

Address: 1 Deer Park Dr, Suite Q, Monmouth Junction, NJ 08852, USA