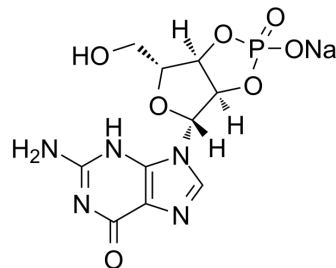


## 2',3'-cGMP sodium

Cat. No.:	HY-N8245
CAS No.:	15718-49-7
Molecular Formula:	C <sub>10</sub> H <sub>11</sub> N <sub>5</sub> NaO <sub>7</sub> P
Molecular Weight:	367.19
Target:	Others
Pathway:	Others
Storage:	Please store the product under the recommended conditions in the Certificate of Analysis.



### BIOLOGICAL ACTIVITY

<b>Description</b>	2',3'-cGMP sodium, a cGMP analogue, is an intermediate of RNA catalytic cleavage by binase <sup>[1]</sup> .
<b>In Vitro</b>	2',3'-cGMP sodium (10 nM-100 μM, 120 min) reduces the active transport of [ <sup>3</sup> H]3',5'-cGMP into inside-out vesicles from human erythrocytes <sup>[2]</sup> . 2',3'-cGMP sodium (2 μM) increases the ATPase activity <sup>[2]</sup> . MCE has not independently confirmed the accuracy of these methods. They are for reference only.

### REFERENCES

[1]. Sokurenko JV, et al. [Identification of 2',3'-cGMP as an intermediate of RNA catalytic cleavage by binase and evaluation of its biological action]. Bioorg Khim. 2015 Jan-Feb;41(1):37-43. Russian.

[2]. Boadu E, et al. Inhibition by guanosine cyclic monophosphate (cGMP) analogues of uptake of [(3)H]3',5'-cGMP without stimulation of ATPase activity in human erythrocyte inside-out vesicles. Biochem Pharmacol. 2001 Aug 15;62(4):425-9.

**Caution: Product has not been fully validated for medical applications. For research use only.**

Tel: 609-228-6898

Fax: 609-228-5909

E-mail: tech@MedChemExpress.com

Address: 1 Deer Park Dr, Suite Q, Monmouth Junction, NJ 08852, USA