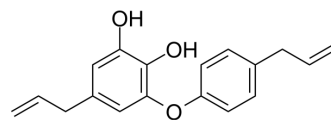


Obovatol

Cat. No.:	HY-N8259
CAS No.:	83864-78-2
Molecular Formula:	C ₁₈ H ₁₈ O ₃
Molecular Weight:	282.33
Target:	Others
Pathway:	Others
Storage:	-20°C, protect from light * In solvent : -80°C, 6 months; -20°C, 1 month (protect from light)



SOLVENT & SOLUBILITY

In Vitro	DMSO : 200 mg/mL (708.39 mM; Need ultrasonic)					
	Preparing Stock Solutions	Solvent Concentration	Mass	1 mg	5 mg	10 mg
		1 mM		3.5420 mL	17.7098 mL	35.4195 mL
		5 mM		0.7084 mL	3.5420 mL	7.0839 mL
		10 mM		0.3542 mL	1.7710 mL	3.5420 mL
Please refer to the solubility information to select the appropriate solvent.						
In Vivo	1. Add each solvent one by one: 10% DMSO >> 40% PEG300 >> 5% Tween-80 >> 45% saline Solubility: ≥ 5 mg/mL (17.71 mM); Clear solution 2. Add each solvent one by one: 10% DMSO >> 90% (20% SBE-β-CD in saline) Solubility: ≥ 5 mg/mL (17.71 mM); Clear solution 3. Add each solvent one by one: 10% DMSO >> 90% corn oil Solubility: ≥ 5 mg/mL (17.71 mM); Clear solution					

BIOLOGICAL ACTIVITY

Description	Obovatol is a biphenyl ether lignan isolated from the leaves of <i>Magnolia obovata</i> Thunb ^[1] .
-------------	--

REFERENCES

[1]. Ito K, et al. Obovatol and obovatol, novel biphenyl ether lignans from the leaves of *Magnolia obovata* Thunb. *Chem Pharm Bull (Tokyo)*. 1982;30(9):3347-3353.

Caution: Product has not been fully validated for medical applications. For research use only.

Tel: 609-228-6898

Fax: 609-228-5909

E-mail: tech@MedChemExpress.com

Address: 1 Deer Park Dr, Suite Q, Monmouth Junction, NJ 08852, USA