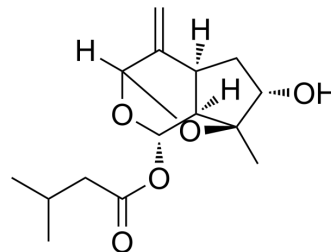


Rupesin E

Cat. No.:	HY-N8300
CAS No.:	924901-58-6
Molecular Formula:	C ₁₅ H ₂₂ O ₅
Molecular Weight:	282.33
Target:	Bacterial
Pathway:	Anti-infection
Storage:	Please store the product under the recommended conditions in the Certificate of Analysis.



BIOLOGICAL ACTIVITY

Description

Rupesin E is a natural product that can be isolated from *Patrinia rupestris*. Rupesin E has significant antibacterial activity against *Escherichia coli*^[1].

REFERENCES

[1]. Yang XP, et al. Five new iridoids from *Patrinia rupestris*. *Chem Biodivers*. 2006 Jul;3(7):762-70.

Caution: Product has not been fully validated for medical applications. For research use only.

Tel: 609-228-6898

Fax: 609-228-5909

E-mail: tech@MedChemExpress.com

Address: 1 Deer Park Dr, Suite Q, Monmouth Junction, NJ 08852, USA