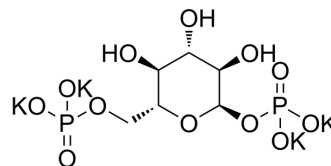


## Alpha-D-Glucose 1,6-bisphosphate tetrapotassium

<b>Cat. No.:</b>	HY-N8365
<b>CAS No.:</b>	91183-87-8
<b>Molecular Formula:</b>	C <sub>6</sub> H <sub>10</sub> K <sub>4</sub> O <sub>12</sub> P <sub>2</sub>
<b>Molecular Weight:</b>	492.48
<b>Target:</b>	Others
<b>Pathway:</b>	Others
<b>Storage:</b>	Please store the product under the recommended conditions in the Certificate of Analysis.



### BIOLOGICAL ACTIVITY

<b>Description</b>	Alpha-D-Glucose 1,6-bisphosphate (tetrapotassium) is a negative stain. Alpha-D-Glucose 1,6-bisphosphate (tetrapotassium) as an accuracy of 86% and has a somewhat higher image contrast <sup>[1]</sup> .
<b>IC<sub>50</sub> &amp; Target</b>	caymanchem; sigmaaldrich; NP000000 <a href="https://sci-hub.se/10.1016/s0304-3991(00)00048-6">https://sci-hub.se/10.1016/s0304-3991(00)00048-6</a> 20230518 CAS0000000010,0000000020230518

### REFERENCES

[1]. William H Massover, et al. Light atom derivatives of structure-preserving sugars are unconventional negative stains. Ultramicroscopy. 2020, 85, 2.

**Caution: Product has not been fully validated for medical applications. For research use only.**

Tel: 609-228-6898

Fax: 609-228-5909

E-mail: [tech@MedChemExpress.com](mailto:tech@MedChemExpress.com)

Address: 1 Deer Park Dr, Suite Q, Monmouth Junction, NJ 08852, USA