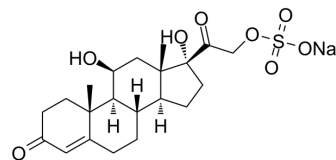


Cortisol sulfate sodium

Cat. No.:	HY-N8460A
CAS No.:	1852-36-4
Molecular Formula:	C ₂₁ H ₂₉ NaO ₈ S
Molecular Weight:	464.5
Target:	Endogenous Metabolite
Pathway:	Metabolic Enzyme/Protease
Storage:	Please store the product under the recommended conditions in the Certificate of Analysis.



BIOLOGICAL ACTIVITY

Description	Cortisol sulfate sodium (Cortisol 21-sulfate) is a metabolite of Cortisol (HY-N0583). Cortisol sulfate sodium is a specific ligand for intracellular transcortin ^{[1][2][3]} .
In Vivo	Cortisol sulfate sodium (3 mg; i.m.; every other day; for 2-7 weeks) affects behavior through its direct action on the central nervous system ^[4] . MCE has not independently confirmed the accuracy of these methods. They are for reference only.

CUSTOMER VALIDATION

- Proc Natl Acad Sci U S A. 2022 Apr 12;119(15):e2117004119.

See more customer validations on www.MedChemExpress.com

REFERENCES

- [1]. C S Hall, et al. Simultaneous metabolism of cortisol sulfate and cortisol in normal human adults. *J Clin Endocrinol Metab.* 1970 Oct;31(4):439-44.
- [2]. S S Singer, et al. Enzymatic sulfation of steroids. I. The enzymatic basis for the sex difference in cortisol sulfation by rat liver preparations. *Endocrinology.* 1976 Apr;98(4):963-74.
- [3]. T Hayashi, et al. Cortisol-21-sulfate (FS) is a specific ligand for intracellular transcortin: demonstration of three types of high affinity corticosteroid binders in bovine aortic cytosol by a combined use of FS and RU 28362. *Endocrinology.* 1990 Jan;126(1):307-16.
- [4]. S Miyabo, et al. Behavioral and other systemic effects of cortisol-21 sulfate. *Horm Behav.* 1972 Sep;3(3):227-36.

Caution: Product has not been fully validated for medical applications. For research use only.

Tel: 609-228-6898

Fax: 609-228-5909

E-mail: tech@MedChemExpress.com

Address: 1 Deer Park Dr, Suite Q, Monmouth Junction, NJ 08852, USA