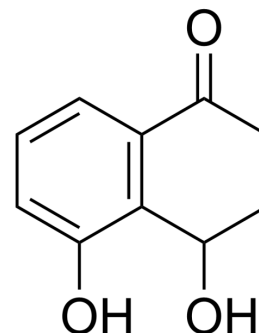


(Rac)-Sclerone

Cat. No.:	HY-N8547A
CAS No.:	19638-58-5
Molecular Formula:	C ₁₀ H ₁₀ O ₃
Molecular Weight:	178.18
Target:	Cholinesterase (ChE)
Pathway:	Neuronal Signaling
Storage:	Please store the product under the recommended conditions in the Certificate of Analysis.



BIOLOGICAL ACTIVITY

Description	(Rac)-Sclerone is a natural product, that can be isolated from the green husk of <i>Carya illinoensis</i> . (Rac)-Sclerone shows appreciable inhibition of AChE, with an IC ₅₀ of 192.65 ± 10.12 µg/mL ^[1] .
IC ₅₀ & Target	AChE 192.65 ± 1 µg/mL (IC ₅₀)

REFERENCES

[1]. Devidas SB, et al. Two undescribed diarylheptanoids from green husk of *Carya illinoensis* as acetylcholinesterase inhibitors. *Nat Prod Res.* 2022 Mar;36(5):1161-1169.

Caution: Product has not been fully validated for medical applications. For research use only.

Tel: 609-228-6898

Fax: 609-228-5909

E-mail: tech@MedChemExpress.com

Address: 1 Deer Park Dr, Suite Q, Monmouth Junction, NJ 08852, USA