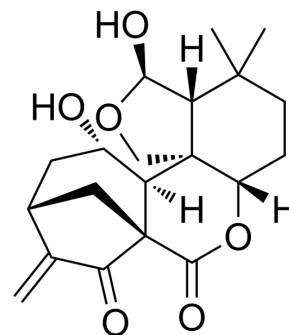


Epinodosin

| | |
|--------------------|---|
| Cat. No.: | HY-N8658 |
| CAS No.: | 20086-60-6 |
| Molecular Formula: | C ₂₀ H ₂₆ O ₆ |
| Molecular Weight: | 362.42 |
| Target: | Others |
| Pathway: | Others |
| Storage: | Please store the product under the recommended conditions in the Certificate of Analysis. |



BIOLOGICAL ACTIVITY

| | |
|---------------------------|--|
| Description | Epinodosin is a diterpenoid. Epinodosin has moderate cytotoxicity against HL-60 cells with IC ₅₀ value of 10.4 μM. Epinodosin can be used for the research of inflammatory diseases ^[1] . |
| IC ₅₀ & Target | IC ₅₀ : 10.4 μM (HL-60 cells) ^[1] |
| In Vitro | Epinodosin (Compounds 3) exhibits moderate cytotoxicity against HL-60 cells with an IC ₅₀ value of 10.4 μM ^[1] . MCE has not independently confirmed the accuracy of these methods. They are for reference only. |

REFERENCES

[1]. Su-Ping Bai, et al. Two novel ent-kauranoid diterpenoids from *Isodon japonica* leaves. *Planta Med.* 2005 Aug;71(8):764-9.

Caution: Product has not been fully validated for medical applications. For research use only.

Tel: 609-228-6898

Fax: 609-228-5909

E-mail: tech@MedChemExpress.com

Address: 1 Deer Park Dr, Suite Q, Monmouth Junction, NJ 08852, USA