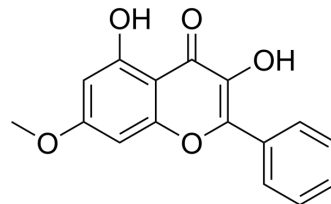


Izalpinin

Cat. No.:	HY-N8718
CAS No.:	480-14-8
Molecular Formula:	C ₁₆ H ₁₂ O ₅
Molecular Weight:	284.26
Target:	Others
Pathway:	Others
Storage:	Please store the product under the recommended conditions in the Certificate of Analysis.



BIOLOGICAL ACTIVITY

Description	Izalpinin is a dihydrochalcone with cytotoxic effect against cancer cell lines. Izalpinin can be isolated from the leaves of <i>Muntingia calabura</i> ^[1] .
In Vitro	Izalpinin (compound 9) inhibits cell viability of cancer cell lines with IC ₅₀ s of 8.9 µg/mL (P388) and 15.0 µg/mL (HT-29), respectively ^[1] . MCE has not independently confirmed the accuracy of these methods. They are for reference only.

REFERENCES

[1]. Chen JJ, et al. Cytotoxic chalcones and flavonoids from the leaves of *Muntingia calabura*. *Planta Med.* 2005 Oct;71(10):970-3.

Caution: Product has not been fully validated for medical applications. For research use only.

Tel: 609-228-6898

Fax: 609-228-5909

E-mail: tech@MedChemExpress.com

Address: 1 Deer Park Dr, Suite Q, Monmouth Junction, NJ 08852, USA