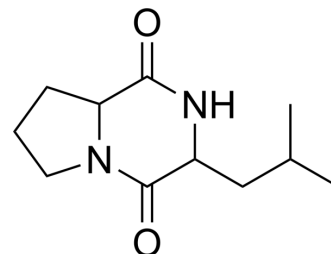


Cyclo(Pro-Leu)

Cat. No.:	HY-N8743
CAS No.:	5654-86-4
Molecular Formula:	C ₁₁ H ₁₈ N ₂ O ₂
Molecular Weight:	210.27
Target:	Endogenous Metabolite
Pathway:	Metabolic Enzyme/Protease
Storage:	Please store the product under the recommended conditions in the Certificate of Analysis.



BIOLOGICAL ACTIVITY

Description	Cyclo(Pro-Leu) (A 65190) is an active metabolite. Cyclo(Pro-Leu) can be isolated from Streptomyces sp. BM8. Cyclo(Pro-Leu) can be used for the research of cancer ^[1] .
IC ₅₀ & Target	Microbial Metabolite
In Vitro	Cyclo(Pro-Leu) (compound 7) (1.23 µg/mL-300 µg/mL; 48 h) has cytotoxic activity for HT-29, MCF-7, A375, K562, and NCM460 cell lines with IC ₅₀ values of 101.56 µM, 78.78 µM, 51.13 µM, 21.72 µM and 775.86 µM, respectively ^[1] . MCE has not independently confirmed the accuracy of these methods. They are for reference only.

REFERENCES

[1]. Shengsheng Lu, et al. Secondary Metabolites with Cytotoxic Activities from Streptomyces sp. BM-8 Isolated from the Feces of Equus quagga. Molecules. 2021 Dec 13;26(24):7556.

Caution: Product has not been fully validated for medical applications. For research use only.

Tel: 609-228-6898

Fax: 609-228-5909

E-mail: tech@MedChemExpress.com

Address: 1 Deer Park Dr, Suite Q, Monmouth Junction, NJ 08852, USA