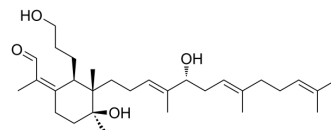


Isoiridogermanal

Cat. No.:	HY-N8859
CAS No.:	86293-25-6
Molecular Formula:	C ₃₀ H ₅₀ O ₄
Molecular Weight:	474.72
Target:	Others
Pathway:	Others
Storage:	Please store the product under the recommended conditions in the Certificate of Analysis.



BIOLOGICAL ACTIVITY

Description	Isoiridogermanal can be isolated from the extract of rhizomes of <i>Iris tectorum</i> Maxim. Isoiridogermanal is cytotoxic with IC ₅₀ values of 11 μM and 23 μM against MCF-7 and C32 cell lines.
--------------------	--

REFERENCES

[1]. Rui Fang, et al. Cytotoxic effects of compounds from *Iris tectorum* on human cancer cell lines. *Journal of Ethnopharmacology*. 2008, 118, 2.

Caution: Product has not been fully validated for medical applications. For research use only.

Tel: 609-228-6898

Fax: 609-228-5909

E-mail: tech@MedChemExpress.com

Address: 1 Deer Park Dr, Suite Q, Monmouth Junction, NJ 08852, USA