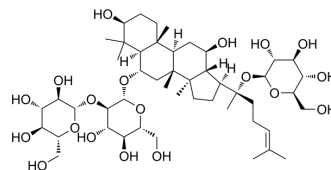


20-Gluco-ginsenoside-Rf

Cat. No.:	HY-N8901
CAS No.:	68406-27-9
Molecular Formula:	C ₄₈ H ₈₂ O ₁₉
Molecular Weight:	963.15
Target:	Biochemical Assay Reagents
Pathway:	Others
Storage:	Please store the product under the recommended conditions in the Certificate of Analysis.



BIOLOGICAL ACTIVITY

Description

20-Gluco-ginsenoside-Rf (compound 4) is a bisdesmosidic saponin that can be obtained from the roots of *Panax ginseng*^[1].

REFERENCES

[1]. Cho JG, et al. Re-evaluation of physicochemical and NMR data of triol ginsenosides Re, Rf, Rg2, and 20-gluco-Rf from *Panax ginseng* roots. *J Ginseng Res.* 2014 Apr;38(2):116-22.

Caution: Product has not been fully validated for medical applications. For research use only.

Tel: 609-228-6898

Fax: 609-228-5909

E-mail: tech@MedChemExpress.com

Address: 1 Deer Park Dr, Suite Q, Monmouth Junction, NJ 08852, USA