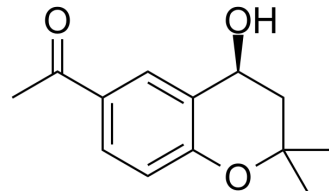


## (S)-1-(4-Hydroxy-2,2-dimethylchroman-6-yl)ethanone

Cat. No.:	HY-N9022
CAS No.:	1890153-71-5
Molecular Formula:	C <sub>13</sub> H <sub>16</sub> O <sub>3</sub>
Molecular Weight:	220.26
Target:	Others
Pathway:	Others
Storage:	Please store the product under the recommended conditions in the Certificate of Analysis.



### BIOLOGICAL ACTIVITY

#### Description

(S)-1-(4-Hydroxy-2,2-dimethylchroman-6-yl)ethanone is an enantiopure chiral alcohol. Stereoselective reduction of prochiral ketones is studied by using both cell cultures and wild tissues of various endemic plant species<sup>[1]</sup>.

### REFERENCES

[1]. Alejandro A.Orden, et al. Comparative study in the asymmetric bioreduction of ketones by plant organs and undifferentiated cells. *Journal of Molecular Catalysis B: Enzymatic*. 2008 March 3,51 (1-2):49-55.

**Caution: Product has not been fully validated for medical applications. For research use only.**

Tel: 609-228-6898

Fax: 609-228-5909

E-mail: tech@MedChemExpress.com

Address: 1 Deer Park Dr, Suite Q, Monmouth Junction, NJ 08852, USA