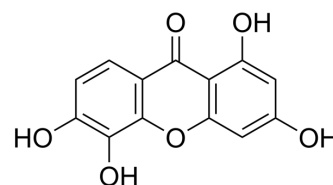


1,3,5,6-Tetrahydroxyxanthone

Cat. No.:	HY-N9113
CAS No.:	5084-31-1
Molecular Formula:	C ₁₃ H ₈ O ₆
Molecular Weight:	260.2
Target:	Others
Pathway:	Others
Storage:	Please store the product under the recommended conditions in the Certificate of Analysis.



BIOLOGICAL ACTIVITY

Description

1,3,5,6-Tetrahydroxyxanthone is a natural xanthone that can be isolated from *Garcinia achachairu* Rusby (Clusiaceae) branches. 1,3,5,6-Tetrahydroxyxanthone induces diuresis and saluresis in normotensive and hypertensive rats^[1].

REFERENCES

[1]. Bolda Mariano LN, et al. 1,3,5,6-Tetrahydroxyxanthone, a natural xanthone, induces diuresis and saluresis in normotensive and hypertensive rats. *Chem Biol Interact.* 2019 Sep 25;311:108778.

Caution: Product has not been fully validated for medical applications. For research use only.

Tel: 609-228-6898

Fax: 609-228-5909

E-mail: tech@MedChemExpress.com

Address: 1 Deer Park Dr, Suite Q, Monmouth Junction, NJ 08852, USA