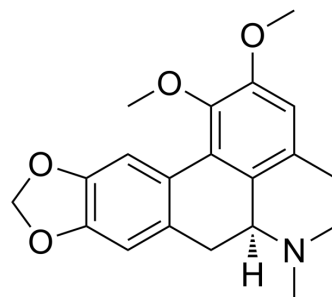


Nantenine

Cat. No.:	HY-N9141
CAS No.:	2565-01-7
Molecular Formula:	C ₂₀ H ₂₁ NO ₄
Molecular Weight:	339.39
Target:	5-HT Receptor
Pathway:	GPCR/G Protein; Neuronal Signaling
Storage:	Please store the product under the recommended conditions in the Certificate of Analysis.



BIOLOGICAL ACTIVITY

Description

Nantenine is a serotonergic receptor antagonist. Nantenine selectively inhibits the contractile response of tissues to serotonin. Nantenine can be isolated from *Nandina domestica*^[1].

REFERENCES

[1]. Shoji N, et al Serotonergic Receptor Antagonist from *Nandina domestica* Thunberg. *J Pharm Sci.* 1984 Apr;73(4):568-70.

Caution: Product has not been fully validated for medical applications. For research use only.

Tel: 609-228-6898

Fax: 609-228-5909

E-mail: tech@MedChemExpress.com

Address: 1 Deer Park Dr, Suite Q, Monmouth Junction, NJ 08852, USA