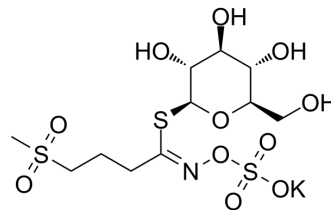


Glucocheirolin

Cat. No.:	HY-N9226
CAS No.:	15592-36-6
Molecular Formula:	C ₁₁ H ₂₀ KNO ₁₁ S ₃
Molecular Weight:	477.57
Target:	Others
Pathway:	Others
Storage:	Please store the product under the recommended conditions in the Certificate of Analysis.



BIOLOGICAL ACTIVITY

Description

Glucocheirolin, a natural compound that can be isolated from *Erysimum corinthium* Boiss, possesses antinutritional and toxic effects in rats^[1].

REFERENCES

[1]. N Bille, et al. Antinutritional and toxic effects in rats of individual glucosinolates (+/- myrosinases) added to a standard diet. 1. Effects on protein utilization and organ weights. *Z Tierphysiol Tierernahr Futtermittelkd.* 1983 May;49(4-5):195-210.

Caution: Product has not been fully validated for medical applications. For research use only.

Tel: 609-228-6898

Fax: 609-228-5909

E-mail: tech@MedChemExpress.com

Address: 1 Deer Park Dr, Suite Q, Monmouth Junction, NJ 08852, USA