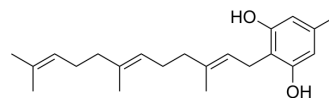


## Grifolin

<b>Cat. No.:</b>	HY-N9271
<b>CAS No.:</b>	6903-07-7
<b>Molecular Formula:</b>	C <sub>22</sub> H <sub>32</sub> O <sub>2</sub>
<b>Molecular Weight:</b>	328.49
<b>Target:</b>	Apoptosis
<b>Pathway:</b>	Apoptosis
<b>Storage:</b>	4°C, protect from light, stored under nitrogen * In solvent : -80°C, 6 months; -20°C, 1 month (protect from light, stored under nitrogen)



### SOLVENT & SOLUBILITY

#### In Vitro

DMSO : 16.5 mg/mL (50.23 mM; Need ultrasonic and warming)

Concentration	Solvent	Mass		
		1 mg	5 mg	10 mg
Preparing Stock Solutions	1 mM	3.0442 mL	15.2212 mL	30.4423 mL
	5 mM	0.6088 mL	3.0442 mL	6.0885 mL
	10 mM	0.3044 mL	1.5221 mL	3.0442 mL

Please refer to the solubility information to select the appropriate solvent.

### BIOLOGICAL ACTIVITY

#### Description

Grifolin is an antineoplastic agent can be isolated from the mushroom *Albatrellus confluens* and significantly induces apoptosis<sup>[1]</sup>.

### CUSTOMER VALIDATION

- Gut Microbes. 2024 Jan-Dec;16(1):2333790.

See more customer validations on [www.MedChemExpress.com](http://www.MedChemExpress.com)

### REFERENCES

[1]. Ye M, et al. Grifolin, a potential antitumor natural product from the mushroom *Albatrellus confluens*, induces cell-cycle arrest in G1 phase via the ERK1/2 pathway.

**Caution: Product has not been fully validated for medical applications. For research use only.**

Tel: 609-228-6898

Fax: 609-228-5909

E-mail: [tech@MedChemExpress.com](mailto:tech@MedChemExpress.com)

Address: 1 Deer Park Dr, Suite Q, Monmouth Junction, NJ 08852, USA