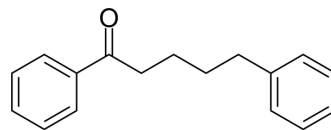


## 1,5-Diphenyl-2-penten-1-one

Cat. No.:	HY-N9698
CAS No.:	39686-51-6
Molecular Formula:	C <sub>17</sub> H <sub>18</sub> O
Molecular Weight:	238.32
Target:	Others
Pathway:	Others
Storage:	Please store the product under the recommended conditions in the Certificate of Analysis.



### BIOLOGICAL ACTIVITY

#### Description

1,5-Diphenyl-2-penten-1-one is a natural product extracted from *Stellera chamaejasme*. 1,5-Diphenyl-2-penten-1-one has strong contact activity and very good anti-feedant activity against *Aphis gossypii* and *Schizaphis graminum*<sup>[1]</sup>.

### REFERENCES

[1]. P Gao, et al. Activity of the botanical aphicides 1,5-diphenyl-1-pentanone and 1,5-diphenyl-2-penten-1-one on two species of Aphididae. *Pest Manag Sci.* 2001 Mar;57(3):307-10.

**Caution: Product has not been fully validated for medical applications. For research use only.**

Tel: 609-228-6898

Fax: 609-228-5909

E-mail: tech@MedChemExpress.com

Address: 1 Deer Park Dr, Suite Q, Monmouth Junction, NJ 08852, USA