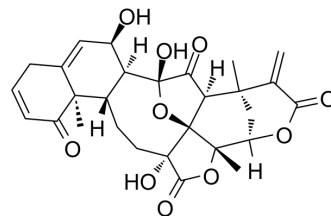


Physalin A

Cat. No.:	HY-N9942
CAS No.:	23027-91-0
Molecular Formula:	C ₂₈ H ₃₀ O ₁₀
Molecular Weight:	526.53
Target:	Apoptosis; Autophagy
Pathway:	Apoptosis; Autophagy
Storage:	4°C, protect from light * In solvent : -80°C, 6 months; -20°C, 1 month (protect from light)



BIOLOGICAL ACTIVITY

Description

Physalin A is a withanolide isolated from *Physalis alkekengi* var. *franchetii*. Physalin A induces apoptosis associated with up-regulation of caspase-3 and caspase-8 expression. Physalin A induces autophagy, found to antagonize apoptosis in HT1080 cells. Physalin A has the potential for the research of cancer disease^[1].

REFERENCES

[1]. He H, et al. Physalin A induces apoptotic cell death and protective autophagy in HT1080 human fibrosarcoma cells. *J Nat Prod.* 2013;76(5):880-888.

Caution: Product has not been fully validated for medical applications. For research use only.

Tel: 609-228-6898

Fax: 609-228-5909

E-mail: tech@MedChemExpress.com

Address: 1 Deer Park Dr, Suite Q, Monmouth Junction, NJ 08852, USA