

## Protirelin

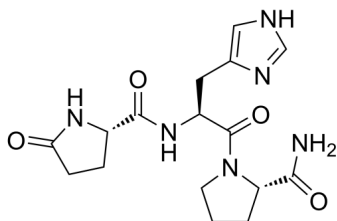
---

Cat. No.: HY-P0002  
Batch No.: 310711  
CAS No.: 24305-27-9  
Molecular Formula: C<sub>16</sub>H<sub>22</sub>N<sub>6</sub>O<sub>4</sub>

### ANALYTICAL DATA

Theoretical: C(-), H(-), N(-), Peptide Content(≥60.0%)  
Result: C(49.15%), H(5.91%), N(22.67%), Peptide Content(97.75%)

Chemical Structure:



**Caution: Product has not been fully validated for medical applications. For research use only.**

Tel: 609-228-6898

Fax: 609-228-5909

E-mail: [tech@MedChemExpress.com](mailto:tech@MedChemExpress.com)

Address: 1 Deer Park Dr, Suite Q, Monmouth Junction, NJ 08852, USA