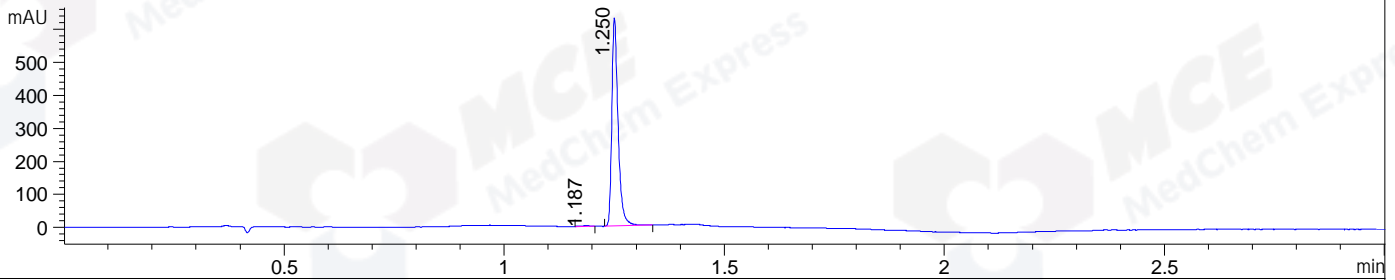
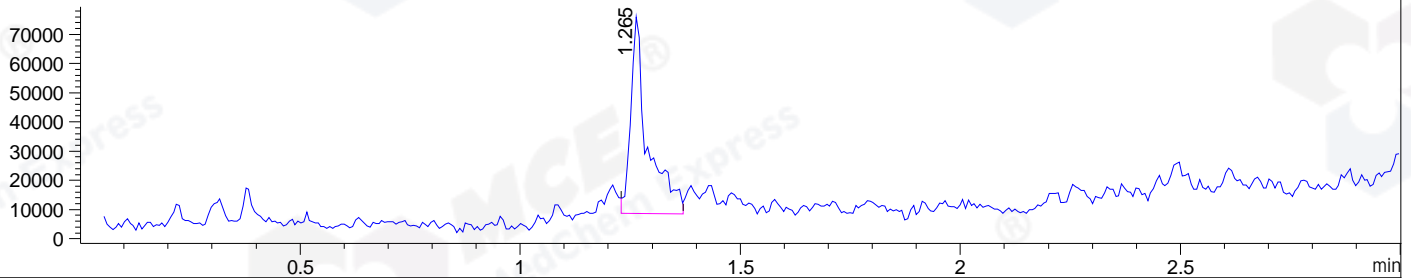


File ..DATA\2019\20190720\650\CPK2019-717-21491-.D Tgt Mass (CHM):  
Injection Date : 20 Jul 19 3:08 pm +0800 Seq. Line : 82  
Sample Name : CPK2019-717-21491 Location : P2-B-02  
Acq. Operator : ZJ\_1432 Inj : 1  
Spec. Reported : MS Integration Inj Volume : 3 ul  
Acq. Method : D:\Chem32\1\data\2019\20190720\650\1-POS-3MIN.M  
Analysis Method : D:\CHEM32\1\DATA\2019\20190720\650\1-POS-3MIN.M  
Catalog No : HY-P0006 Batch#21491  
Method Info : Mobile Phase: A: water(0.01%TFA) B:ACN(0.01%TFA)  
Gradient: 5% to 95%B within 1.3 min  
Flow Rate :1.8ml/min  
Column :SunFire C18, 4.6\*50mm,3.5um A-RP-433  
Oven Temperature : 45

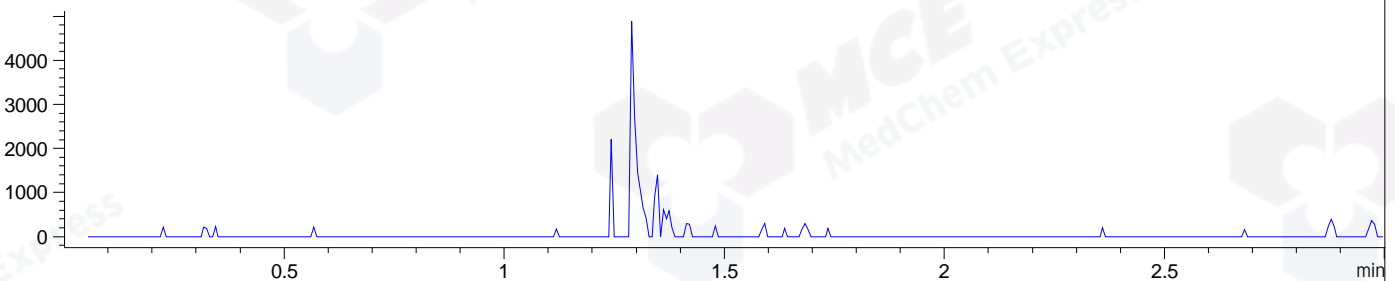
DAD1 B, Sig=214,4 Ref=off



MSD1 TIC, MS File ES-API, Pos, Scan, Frag: 70



Ion 595.9, MSD1 595.9, Target Mass 594.9 +H Positive, EIC=595.6:596.6



Integration Results for DAD1 B, Sig=214,4 Ref=off

RetTim	Width	Area	Height	Area%	MS (+)
1.19	0.02	3.92	3.05	0.63	136
1.25	0.02	623.09	630.68	99.37	595

Integration Results for MSD1 TIC, MS File

RetTim	Width	Area	Height	Area%	MS (+)
1.26	0.04	180938.56	67552.65	100.00	595

Ret. Time: 1.26

<<<< POSITIVE SPECTRA >>>>

ES-API Positive

