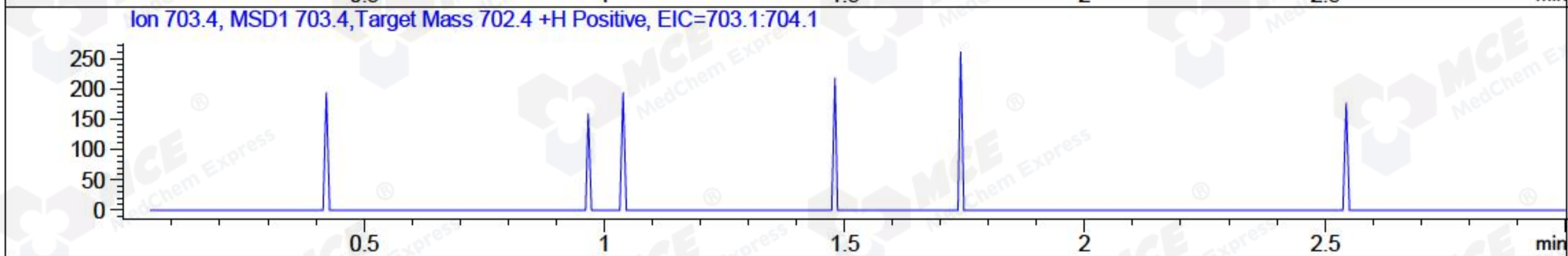
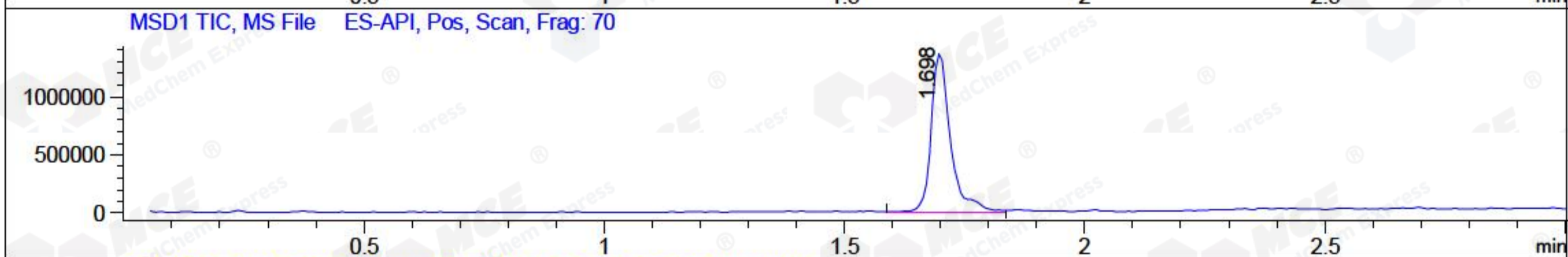
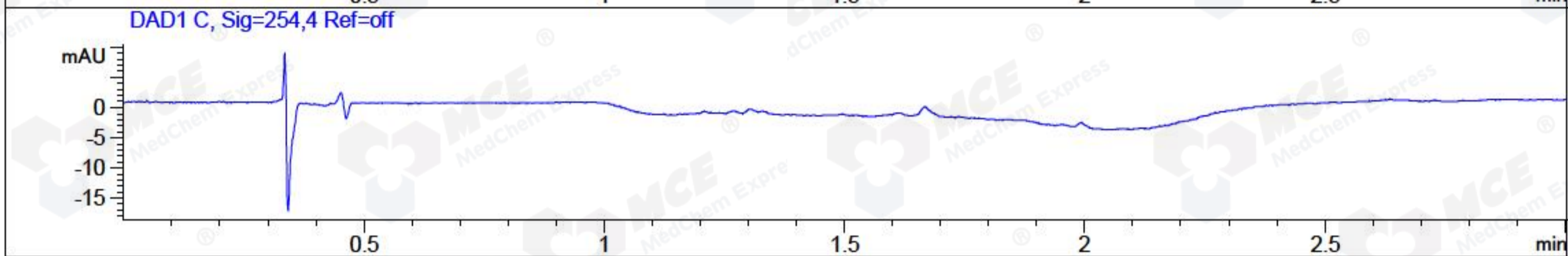
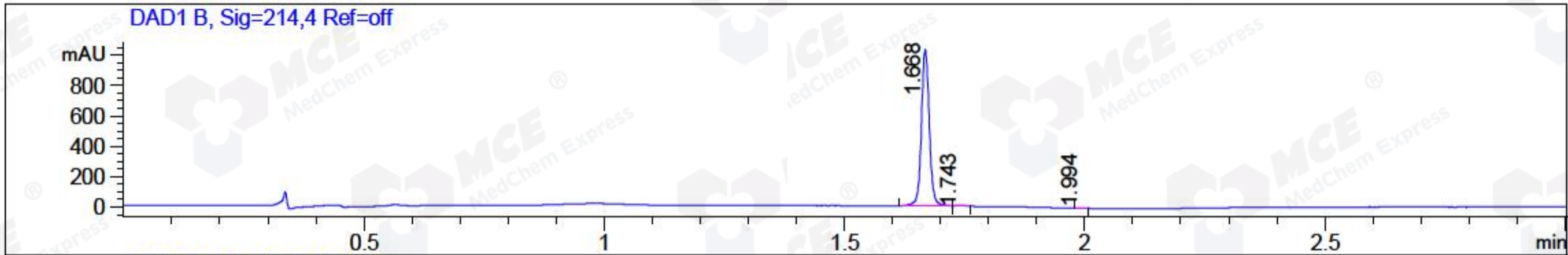


File ..\DATA\2018\20181130\516\BIZ2018-N30-WYQ2.D Tgt Mass (CHM):  
 Injection Date : 30 Nov 18 8:08 pm +0800 Seq. Line : 40  
 Sample Name : BIZ2018-N30-WYQ2 Location : P1-A-01  
 Acq. Operator : LQ\_1052 Inj : 1  
 Spec. Reported : MS Integration Inj Volume : 8 ul  
 Acq. Method : D:\Chem32\1\data\2018\20181130\516\1-POS-3MIN-1.M  
 Analysis Method : D:\CHEM32\1\DATA\2018\20181130\516\1-POS-3MIN-1.M  
 Catalog No : HY-P0018B Batch#34777 A-RP-314  
 Method Info : Mobile Phase: A: water(0.01%TFA) B:ACN(0.01%TFA)  
 Gradient: 5% to 95%B within 1.3 min  
 Flow Rate :1.8ml/min  
 Column :SunFire C18, 4.6\*50mm,3.5um A-RP-314  
 Oven Temperature : 45



Integration Results for DAD1 B, Sig=214,4 Ref=off

RetTim	Width	Area	Height	Area%	MS (+)
1.67	0.02	1171.31	1030.26	99.35	686
1.74	0.02	6.36	6.27	0.54	686
1.99	0.01	1.33	1.60	0.11	158

Integration Results for DAD1 C, Sig=254,4 Ref=off

RetTim	Width	Area	Height	Area%	MS (+)

Integration Results for MSD1 TIC, MS File

RetTim	Width	Area	Height	Area%	MS (+)
1.70	0.04	3810433.25	1357497.38	100.00	686

Ret. Time: 1.70

<<<< POSITIVE SPECTRA >>>>

ES-API Positive

