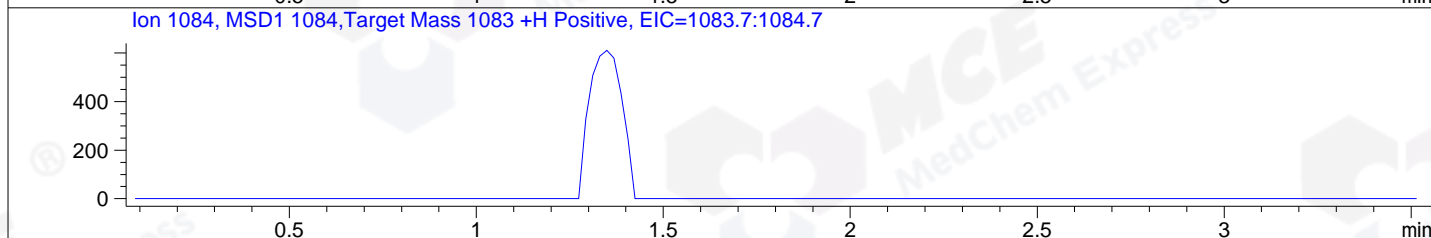
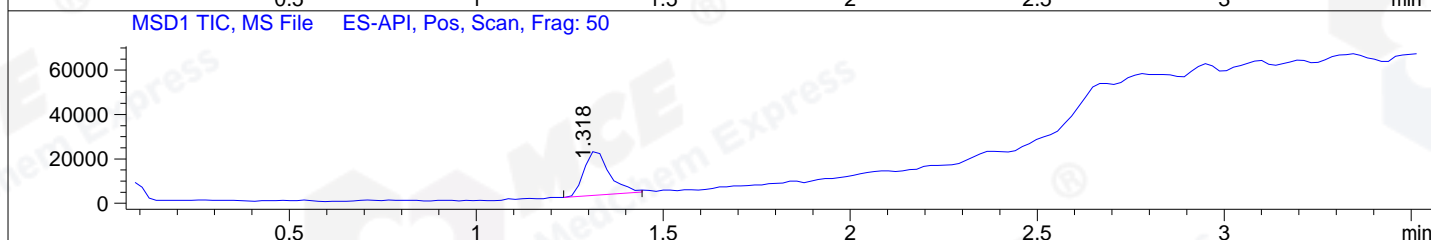
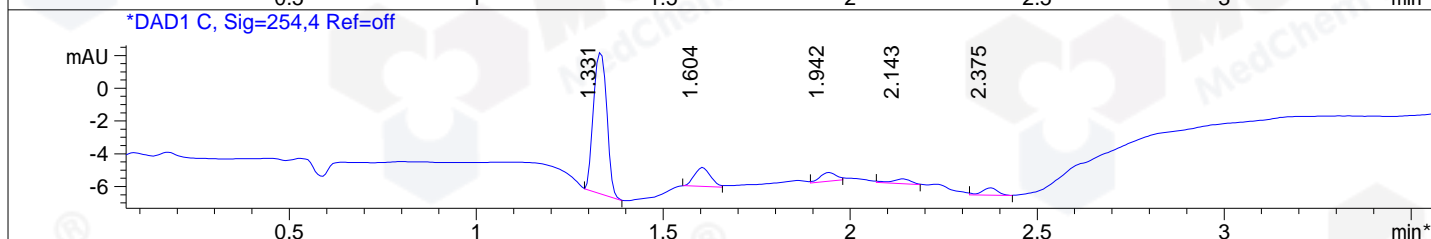
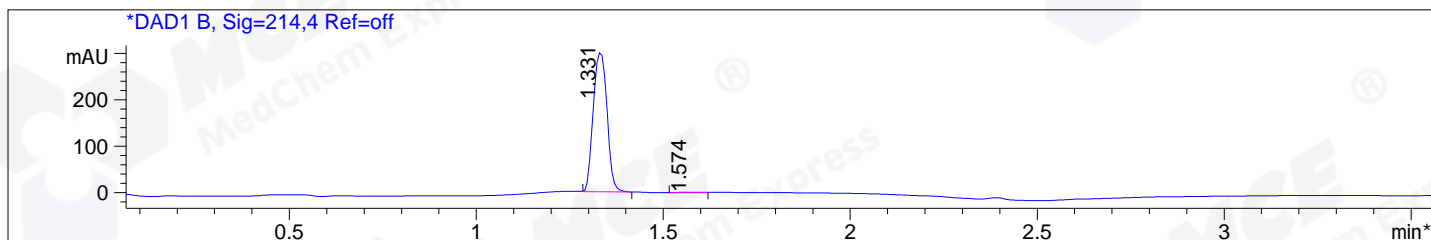


Report File: C:\MSDCHEM\1\DATA\BIZ\BIZ2016-802-WJ4.D Tgt Mass (EZ): 1083.00  
 Injection Date : 3 Aug 16 1:59 pm +0800 Seq. Line : 0  
 Sample Name : BIZ2016-802-WJ4 Location : P1-C-09  
 Acq. Operator : KFF (LCMS-02) Inj : 1  
 Spec. Reported : MS Integration Inj Volume : 1 ul  
 Acq. Method : D:\Chem32\1\METHODS\100-1500MS+3MIN\_1.5(0.02%FA).M  
 Analysis Method : D:\CHEM32\1\METHODS\1-POS-3MIN-PROSRSS.M  
 Catalog No : HY-P0049 Batch#21295 Easy-Access Method: '100-1500MS+3MIN\_1.5(0.02%FA)M' 1083  
 Method Info : Column: A-RP-169



Integration Results for DAD1 B, Sig=214,4 Ref=off

RetTim	Width	Area	Height	Area%	MS (+)
1.33	0.04	770.28	300.80	99.66	543
1.57	0.08	2.63	0.57	0.34	102

Integration Results for DAD1 C, Sig=254,4 Ref=off

RetTim	Width	Area	Height	Area%	MS (+)
1.33	0.04	21.52	8.66	74.40	543
1.60	0.05	3.49	1.16	12.06	102
1.94	0.05	1.60	0.54	5.53	102
2.14	0.06	1.02	0.30	3.52	102
2.38	0.05	1.30	0.45	4.49	102

Ret. Time: 1.32

<<<< POSITIVE SPECTRA >>>>

