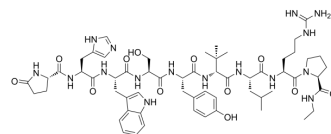


Lecirelin

Cat. No.:	HY-P0051
CAS No.:	61012-19-9
Molecular Formula:	C ₅₉ H ₈₄ N ₁₆ O ₁₂
Molecular Weight:	1209.4
Sequence:	{Glp}-His-Trp-Ser-Tyr-Val-Leu-Arg-Pro
Sequence Shortening:	{Glp}-HWSYVLRP
Target:	GnRH Receptor
Pathway:	GPCR/G Protein
Storage:	Sealed storage, away from moisture
	Powder -80°C 2 years
	-20°C 1 year



* In solvent : -80°C, 6 months; -20°C, 1 month (sealed storage, away from moisture)

SOLVENT & SOLUBILITY

In Vitro

H₂O : 25 mg/mL (20.67 mM; Need ultrasonic)
 DMSO : 12.1 mg/mL (10.00 mM; Need ultrasonic and warming)

Preparing Stock Solutions	Solvent / Mass		1 mg	5 mg	10 mg
	Concentration				
	1 mM		0.8269 mL	4.1343 mL	8.2686 mL
	5 mM		0.1654 mL	0.8269 mL	1.6537 mL
	10 mM		0.0827 mL	0.4134 mL	0.8269 mL

Please refer to the solubility information to select the appropriate solvent.

BIOLOGICAL ACTIVITY

Description

Lecirelin, a synthetic gonadotropin-releasing hormone (GnRH) analogue, acts as a GnRH agonist. Lecirelin is widely used for the research of bovine ovarian follicular cysts^[1].

In Vitro

Lecirelin (2.07 μM) significantly increases the tension and frequency of contractions in preovulatory follicles (PF), small follicular cysts (FC-S), and large follicular cysts (FC-L)^[1].
 Lecirelin increases the strips from preovulatory follicles contract significantly more than strips from cysts^[1].
 MCE has not independently confirmed the accuracy of these methods. They are for reference only.

REFERENCES

Caution: Product has not been fully validated for medical applications. For research use only.

Tel: 609-228-6898

Fax: 609-228-5909

E-mail: tech@MedChemExpress.com

Address: 1 Deer Park Dr, Suite Q, Monmouth Junction, NJ 08852, USA